



**SEYMOUR PLACE, MARYLEBONE, W1H**  
£550 per week\*

**Carter Jonas**

---

## FLAT 2, SEYMOUR PLACE, MARYLEBONE, LONDON, W1H 5AZ

- 1 Bedroom
- 1 Bathroom
- 1 Reception Room
- Second Floor
- Long Let
- Unfurnished (or furnished at separate cost)

### THE PROPERTY

The apartment comprises of a reception room with semi open-plan kitchen, one bedroom and one bathroom.

The property is professionally managed The Portman Estate.

Available for long term rental on an unfurnished basis, or furnished (at separate cost)

Holding deposit is 1 week's rent = £550 (at asking price)

Security deposit is 5 week's rent = £2,750 (at asking price £550pw)

Minimum Term 12 month

Council Tax Band D

For the latest information on broadband and mobile coverage, please visit [checker.ofcom](http://checker.ofcom) for the most up-to-date details.

Seymour Place is situated close to Marylebone High Street and its lively section of stores, restaurants, and cafes. The open areas and leisure amenities of Hyde Park lie to the south. Edgware Road (Circle/District/Hammersmith & City), Marylebone (Bakerloo), Marble Arch (Central), Baker Street (Jubilee/Bakerloo), and Paddington are just a some of the nearby convenient transportation hubs that are close to the property (Elizabeth & mainline Station).

The Portman Estate's 110 acres of land within Marylebone, London W1, has a rich heritage dating back to the 16th century and is the setting for continual investment in premium residential properties, shops and independent businesses. The Portman Estate includes key places of architectural and historical interest along with a vibrant blend of shops, including Portman Village, restaurants, wine-bars,

## A nicely presented second floor one bedroom apartment located on the Portman Estate, Marylebone.





hotels and garden squares - a perfect mix of leisure opportunities for residents in the heart of London`s West End.

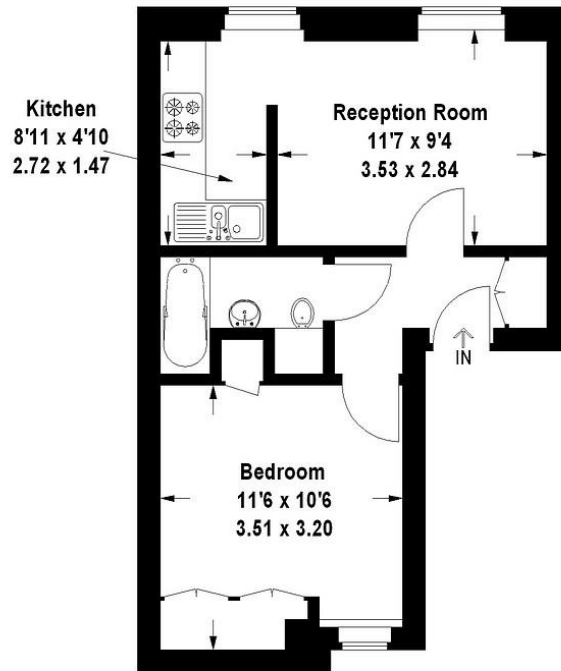
**ADDITIONAL INFORMATION**

Offers	Available for a minimum term of 12 months longer terms will be considered
Viewing	Strictly by appointment
Local Authority	Westminster City Council - Council Tax Band D



# Seymour Place, W1

Approximate Gross Internal Area  
34 sq m / 366 sq ft



**Second Floor**

This plan is for layout guidance only. Not drawn to scale unless stated. Windows and door openings are approximate. Whilst every care is taken in the preparation of this plan, please check all dimensions, shapes and compass bearings before making any decisions reliant upon them.

**T: 020 7486 8866**

37 New Cavendish Street, London, W1G 9TL

E: marylebone.lettings@carterjonas.co.uk

A member of



*Exclusive UK affiliate of*

**CHRISTIE'S**  
INTERNATIONAL REAL ESTATE

Classification L2 - Business Data

Energy Efficiency Rating		
	Current	Potential
Very energy efficient - lower running costs		
(92+) <b>A</b>		
(81-91) <b>B</b>		
(69-80) <b>C</b>	76	80
(55-68) <b>D</b>		
(39-54) <b>E</b>		
(21-38) <b>F</b>		
(1-20) <b>G</b>		
Not energy efficient - higher running costs		
England, Scotland & Wales	EU Directive 2002/91/EC	

## IMPORTANT INFORMATION

These particulars are for general information purposes only and do not represent an offer or contract or part of one. Carter Jonas or anyone in their employment has made every attempt to ensure that the particulars and other information provided are as accurate as possible and they are not intended to amount to advice on which you should rely as being factually accurate. Full information which may be relevant to your decision regarding the property can be found on the property listing on [carterjonas.co.uk](http://carterjonas.co.uk) or a separately available material information sheet, and we would advise you to confirm the details of any material information prior to any offer being submitted. You should not assume that the property has all necessary planning, building regulations or other consents and Carter Jonas has not tested any services, facilities, or equipment. Any measurements and distances given are approximate only. Where Carter Jonas has been provided with a floorplan by a third party, we cannot guarantee that the floorplan has been measured in accordance with IPMS. Purchasers or prospective tenants must satisfy themselves of all of the aforementioned by independent inspection or otherwise. Our images only represent part of the property as it appeared at the time they were taken and do not represent the furnishings included; these are confirmed in a separate inventory. If you require further information, please contact us. \*Administration fees may apply depending on tenancy type. Please contact your local branch for this information.