



**DEVONSHIRE PLACE, MARYLEBONE, W1G**  
£1,375 per week\*

**Carter Jonas**



## **LOWER GROUND FLOOR, DEVONSHIRE PLACE, MARYLEBONE, LONDON, W1G 6JL**

- 2 Bedrooms
- 2 Bathrooms
- Eat-In Kitchen
- Living Room
- Private Terrace
- G-Network is included in the rent
- Unfurnished or furnished at additional cost

### **THE PROPERTY**

This apartment offers a fantastic living space with a large eat-in kitchen and separate living room which opens out to a lovely private terrace. The master bedroom has a great en suite bathroom with bath and separate shower cubicle. There is a second bedroom and bathroom.

The property is professionally managed by the Howard de Walden Estate.

Available for long term rental on an unfurnished basis, or furnished (at separate cost)

Holding deposit is 1 week's rent = £1,375 (at asking price)

Security deposit is 5 week's rent = £6,875 (at asking price £1,375pw)

Minimum Term 12 months

Council Tax Band F

For the latest information on broadband and mobile coverage, please visit [/checker.ofcom](https://www.ofcom.gov.uk/consult/condocs/broadband/broadband-checker/) for the most up-to-date details.

Devonshire Place is enviably close to Marylebone High Street, which is only two blocks away, and is also a few minutes' walk from the green open spaces of Regent's Park. It is also conveniently located near all the West End's shopping and entertainment options. Baker Street Underground Station (Bakerloo, Jubilee, Metropolitan,

**Absolutely stunning contemporary garden apartment of 2,045 sq. ft in the heart of Marylebone Village, close to Regent's Park and all the amenities of Marylebone High Street.**



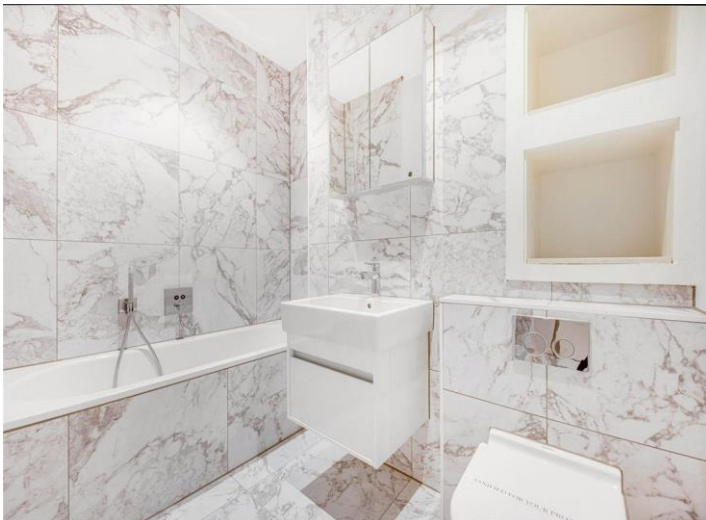
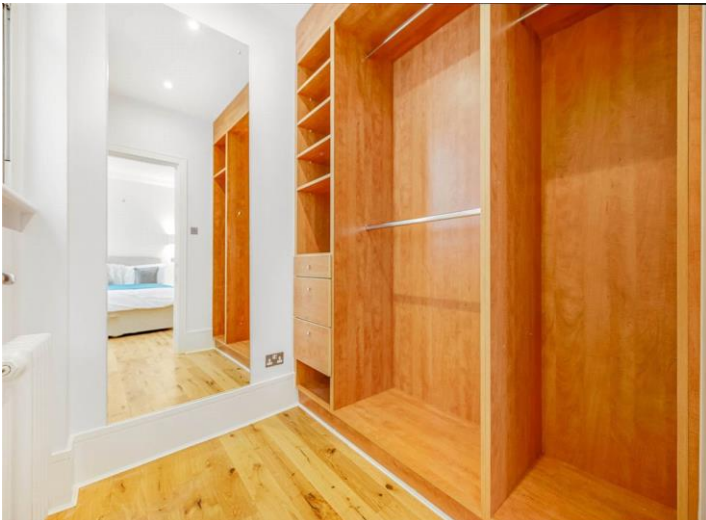


Circle, and Hammersmith & City lines), Regents Park Station, and Warren Street Station are all in proximity.

Marylebone still looks and feels something like the village it was 400 years ago and the handsome Georgian development it was 250 years ago. Its High Street in particular is a pleasure to visit; the atmosphere is a bit more cosmopolitan than other parts of the city, and at the same time, a little more relaxed.

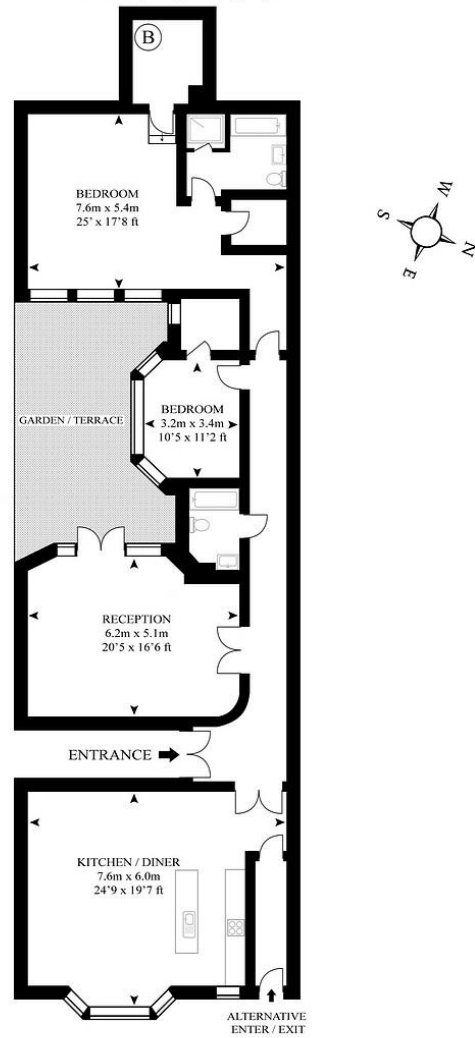
ADDITIONAL INFORMATION

Offers	Available for a minimum term of 12 months longer terms will be considered
Viewing	Strictly by appointment
Local Authority	Westminster City Council - Council Tax Band F





**Devonshire Place**  
APPROX GROSS INTERNAL FLOOR AREA  
2045 SQ.FT ( 190 SQ.M.)



As Defined by RICS - Code of Measuring Practice  
The Floor - plans are for representation purposes only and  
should be used as such by any prospective client.

Panomatics.com

L500248



**IMPORTANT INFORMATION**

These particulars are for general information purposes only and do not represent an offer or contract or part of one. Carter Jonas or anyone in their employment has made every attempt to ensure that the particulars and other information provided are as accurate as possible and they are not intended to amount to advice on which you should rely as being factually accurate. Full information which may be relevant to your decision regarding the property can be found on the property listing on [carterjonas.co.uk](http://carterjonas.co.uk) or a separately available material information sheet, and we would advise you to confirm the details of any material information prior to any offer being submitted. You should not assume that the property has all necessary planning, building regulations or other consents and Carter Jonas has not tested any services, facilities, or equipment. Any measurements and distances given are approximate only. Where Carter Jonas has been provided with a floorplan by a third party, we cannot guarantee that the floorplan has been measured in accordance with IPMS. Purchasers or prospective tenants must satisfy themselves of all of the aforementioned by independent inspection or otherwise. Our images only represent part of the property as it appeared at the time they were taken and do not represent the furnishings included; these are confirmed in a separate inventory. If you require further information, please contact us. \*Administration fees may apply depending on tenancy type. Please contact your local branch for this information.

**T: 020 7486 8866**

37 New Cavendish Street, London, W1G 9TL

E: [marylebone.lettings@carterjonas.co.uk](mailto:marylebone.lettings@carterjonas.co.uk)

A member of



*Exclusive UK affiliate of*  
**CHRISTIE'S**  
INTERNATIONAL REAL ESTATE

Classification L2 - Business Data