



BRYANSTON SQUARE, MARYLEBONE, W1H
£900 per week*

Carter Jonas

FLAT 2, BRYANSTON SQUARE, MARYLEBONE, LONDON, W1H 2DT

- 1 Bedroom
- 1 Bathroom
- Guest WC
- Reception Room
- Kitchen
- High Ceilings
- Access to Gardens

THE PROPERTY

This apartment has been finished to a very high standard and features incredibly high ceilings and original features.

It comprises a large reception room with wood flooring, separate fully fitted kitchen, master bedroom with en-suite bathroom and excellent storage.

It has the added benefit of a guest cloakroom and separate utility room with washing machine and tumble dryer.

Available for long term rental on an unfurnished basis, rental furniture is available at separate cost.

The property is professionally managed by the Portman Estate.

Holding deposit is 1 weeks rent = £900 (at asking price).

Security deposit is 5 weeks rent = £4,500 (at asking price of £900pw)

Minimum Term 12 months.

Council Tax Band F

For the latest information on broadband and mobile coverage, please visit [/checker.ofcom](http://checker.ofcom) for the most up-to-date details.

Bryanston Square is a short walk from Marylebone High Street, as well as Marble Arch and Baker Street Stations, and is an ideal location for all the West End's world-class amenities. Hyde Park's beautiful open spaces are also a short walk away (approximately 0.4 miles).

Stunning newly refurbished apartment on the ground floor of this period building on the sought-after Bryanston Square, offering access to their lovely private gardens.



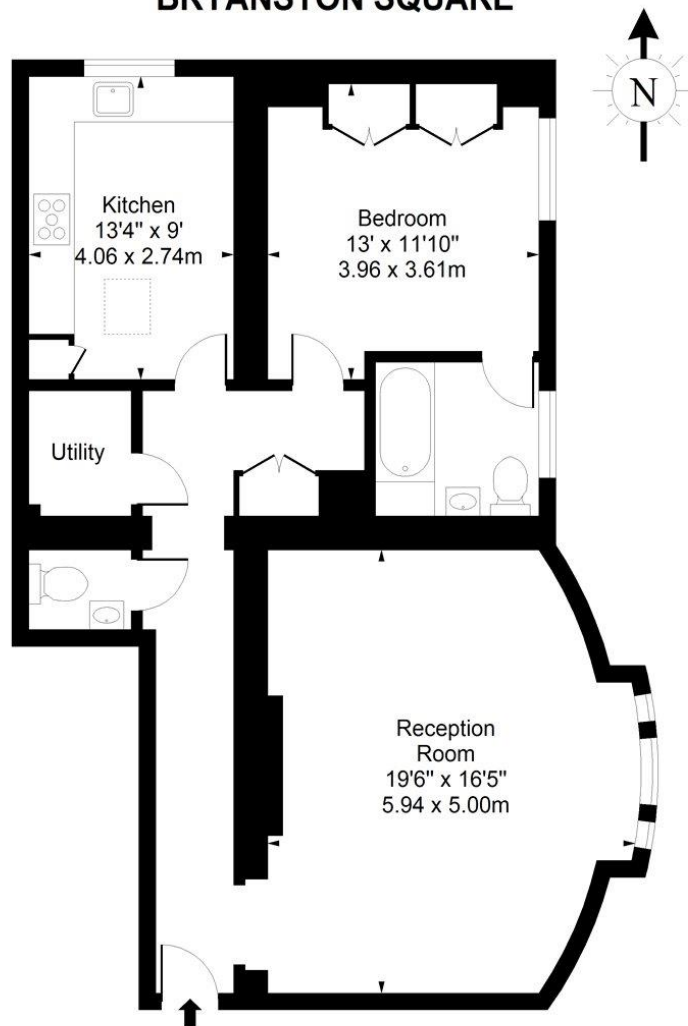
The Portman Estate’s 110 acres of land within Marylebone, London W1, has a rich heritage dating back to the 16th century and is the setting for continual investment in premium residential properties, shops and independent businesses. The Portman Estate includes key places of architectural and historical interest along with a vibrant blend of shops, including Portman Village, restaurants, wine-bars, hotels and garden squares - a perfect mix of leisure opportunities for residents in the heart of London’s West End.

ADDITIONAL INFORMATION

Offers	Available for a minimum term of 12 months longer terms will be considered
Viewing	Strictly by appointment
Local Authority	Westminster City Council - Council Tax Band F



BRYANSTON SQUARE



Ground Floor

Approx. Gross Internal Area 856 Sq Ft - 79.52 Sq M

For Illustrative Purposes Only - Not To Scale

T: 020 7486 8866

37 New Cavendish Street, London, W1G 9TL

E: marylebone.lettings@carterjonas.co.uk

A member of



Exclusive UK affiliate of

CHRISTIE'S
INTERNATIONAL REAL ESTATE

Classification L2 - Business Data



IMPORTANT INFORMATION

These particulars are for general information purposes only and do not represent an offer or contract or part of one. Carter Jonas or anyone in their employment has made every attempt to ensure that the particulars and other information provided are as accurate as possible and they are not intended to amount to advice on which you should rely as being factually accurate. Full information which may be relevant to your decision regarding the property can be found on the property listing on carterjonas.co.uk or a separately available material information sheet, and we would advise you to confirm the details of any material information prior to any offer being submitted. You should not assume that the property has all necessary planning, building regulations or other consents and Carter Jonas has not tested any services, facilities, or equipment. Any measurements and distances given are approximate only. Where Carter Jonas has been provided with a floorplan by a third party, we cannot guarantee that the floorplan has been measured in accordance with IPMS. Purchasers or prospective tenants must satisfy themselves of all of the aforementioned by independent inspection or otherwise. Our images only represent part of the property as it appeared at the time they were taken and do not represent the furnishings included; these are confirmed in a separate inventory. If you require further information, please contact us. *Administration fees may apply depending on tenancy type. Please contact your local branch for this information.