



GLOUCESTER PLACE MEWS, MARYLEBONE, W1U
£1,150 per week*

Carter Jonas

GLOUCESTER PLACE MEWS, MARYLEBONE, LONDON, W1U 8BF

- Two Bedrooms
- Two En-Suite Bathrooms
- Open Plan Kitchen/Reception
- Balcony
- Guest WC
- Located within easy access of Bond Street
- Professionally managed by Portman Estate
- Unfurnished or furnished at extra cost

THE PROPERTY

This lovely, bright mews house features an open plan kitchen/reception room on the first floor, offering lots of natural light.

The reception area has wood flooring plus a balcony overlooking the street and an additional outside winter garden area. There is also a guest cloakroom and utility room of the reception room.

There are two double bedrooms both with ensuite bathrooms (one shower room, one bathroom).

The property is professionally managed by The Portman Estate.

Available for long term rental on an unfurnished basis, or furnished (at separate cost).

Gloucester Place Mews is a charming and tranquil residential area located in the heart of London. This picturesque mews features elegant Georgian-style houses and cobblestone streets, offering a peaceful retreat from bustling city life. The lovely surroundings include nearby cafes, boutiques, and green spaces, making it a desirable place to live. Conveniently situated, Gloucester Place Mews is approximately a 10-minute walk from both Baker Street Station (0.5 miles) and Marylebone Station (0.4 miles), providing easy access to the Underground and National Rail services, connecting residents to various parts of London and beyond.

The Portman Estate is a prestigious property portfolio located in the heart of central London, covering 110 acres of prime real estate in Marylebone. Renting through The Portman Estate comes with the advantage of an in-house property management team, providing

Modernised two-bedroom Mews house with private outside space.



responsive, hands-on service to ensure residents' needs are met quickly and efficiently. This dedicated team helps maintain the quality of living, handling everything from routine maintenance to emergency repairs, making the rental experience hassle-free.

Holding deposit is 1 week's rent = £1,150 (at asking price).

Security deposit is 6 week's rent = £6,900 (at asking price £1,150pw)

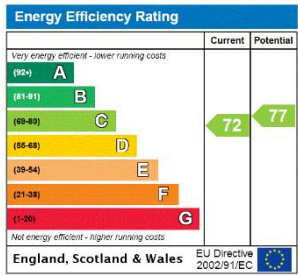
Minimum Term 12 months

Council Tax Band G

<https://checker.ofcom.org.uk/en-gb/broadband-coverage> for the most up-to-date details.

ADDITIONAL INFORMATION

Offers	Available for a minimum term of 12 months longer terms will be considered
Viewing	Strictly by appointment
Local Authority	Westminster City Council - Council Tax Band G

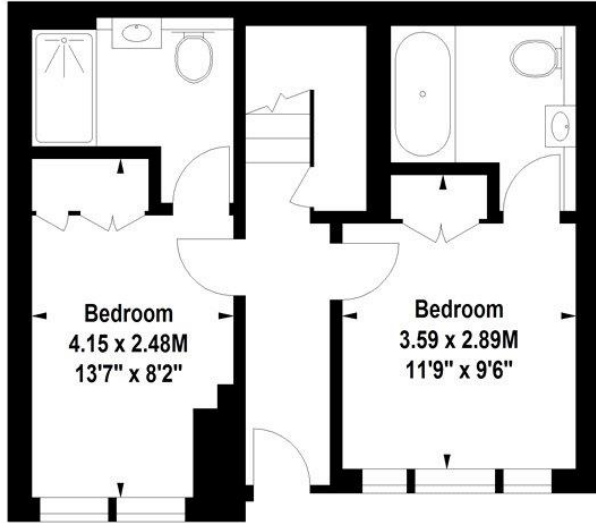




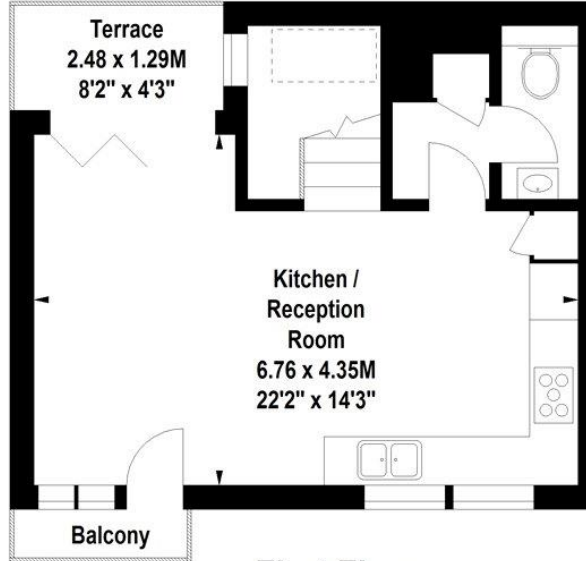
Gloucester Place Mews, W1

Approximate Gross Internal Area 73.48 sq m (791 sq ft)

Approximate Area Of Balcony/Terrace 4.55 sq m (49 sq ft)



Ground Floor



First Floor

hydepark@cluttons.com

020 7262 2226

cluttons.com

Floor Plan produced for Cluttons by Mays Floorplans © . Tel 020 3397 4594

Illustration for identification purposes only, not to scale

All measurements are maximum, and include wardrobes and window bays where applicable



T: 020 7486 8866

37 New Cavendish Street, London, W1G 9TL

E: marylebone.lettings@carterjonas.co.uk

A member of



Exclusive UK affiliate of

CHRISTIE'S
INTERNATIONAL REAL ESTATE

IMPORTANT INFORMATION

These particulars are for general information purposes only and do not represent an offer or contract or part of one. Carter Jonas or anyone in their employment has made every attempt to ensure that the particulars and other information provided are as accurate as possible and they are not intended to amount to advice on which you should rely as being factually accurate. Full information which may be relevant to your decision regarding the property can be found on the property listing on carterjonas.co.uk or a separately available material information sheet, and we would advise you to confirm the details of any material information prior to any offer being submitted. You should not assume that the property has all necessary planning, building regulations or other consents and Carter Jonas has not tested any services, facilities, or equipment. Any measurements and distances given are approximate only. Where Carter Jonas has been provided with a floorplan by a third party, we cannot guarantee that the floorplan has been measured in accordance with IPMS. Purchasers or prospective tenants must satisfy themselves of all of the aforementioned by independent inspection or otherwise. Our images only represent part of the property as it appeared at the time they were taken and do not represent the furnishings included; these are confirmed in a separate inventory. If you require further information, please contact us. *Administration fees may apply depending on tenancy type. Please contact your local branch for this information.