



**GEORGE STREET, MARYLEBONE, W1U**  
£550 per week\*

**Carter Jonas**

## **FLAT C, GEORGE STREET, MARYLEBONE, LONDON, W1U 8LT**

- Professionally managed by The Portman Estate.
- Complimentary membership to Portman Concierge.
- One Bedroom
- One Bathroom
- One Reception Room
- Third Floor with Lift
- Unfurnished (or furnished at separate cost)

### **THE PROPERTY**

The apartment is located on the 3rd floor (with lift) of this building and comprises a good size reception room, separate kitchen, double bedroom and bathroom.

The property is professionally managed by The Portman Estate.

Available for long term rental on an unfurnished basis, or furnished (at separate cost)

Complimentary membership to Portman Concierge.

Please note that Communal heating and hot water included in rent.

George Street is close to Marble Arch and all the fantastic high-end shops on Oxford Street such as, Selfridges. The location is excellent and very convenient for several transportation options. Hyde Park is easily accessible by foot for Green Spaces. Marble Arch station and Edgware Road station, both within 0.4 miles, are the closest tube stops (Approximately 0.6 miles).

The Portman Estate's 110 acres of land within Marylebone, London W1, has a rich heritage dating back to the 16th century and is the setting for continual investment in premium residential properties, shops and independent businesses. The Portman Estate includes key places of architectural and historical interest along with a vibrant blend of shops, including Portman Village, restaurants, wine-bars, hotels and garden squares - a perfect mix of leisure opportunities for residents in the heart of London's West End.

Holding deposit is 1 week's rent = £550 (at asking price)

Security deposit is 5 week's rent = £2,750 (at asking price £550pw)

## **Bright and spacious one bedroom apartment, conveniently located for access to Marylebone High Street and Baker Street Station.**



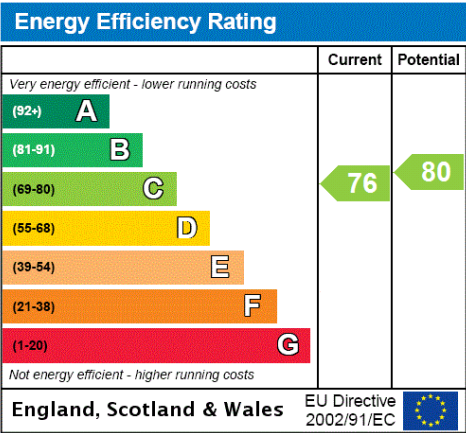
Minimum Term 12 months

Council Tax Band G

For the latest information on broadband and mobile coverage, please visit [/checker.ofcom](#) for the most up-to-date details.

ADDITIONAL INFORMATION

Offers	Available for a minimum term of 12 months longer terms will be considered
Viewing	Strictly by appointment
Local Authority	Westminster City Council - Council Tax Band G

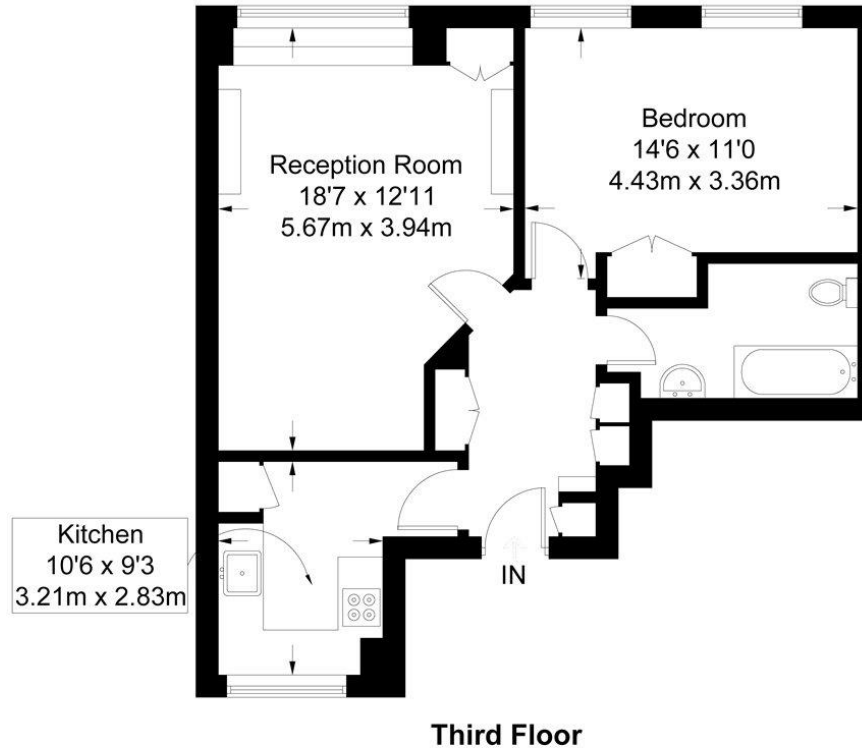


Classification L2 - Business Data



## George Street

Approximate Gross Internal Area = 606 sq ft / 56.3 sq m



Not to scale, for guidance only and must not be relied upon as a statement of fact.  
All measurements and areas are approximate only and have been prepared in accordance with the current edition of the RICS Code of Measuring Practice.

T: 020 7486 8866

37 New Cavendish Street, London, W1G 9TL

E: [marylebone.lettings@carterjonas.co.uk](mailto:marylebone.lettings@carterjonas.co.uk)

A member of



*Exclusive UK affiliate of*

**CHRISTIE'S**  
INTERNATIONAL REAL ESTATE

### IMPORTANT INFORMATION

These particulars are for general information purposes only and do not represent an offer or contract or part of one. Carter Jonas or anyone in their employment has made every attempt to ensure that the particulars and other information provided are as accurate as possible and they are not intended to amount to advice on which you should rely as being factually accurate. Full information which may be relevant to your decision regarding the property can be found on the property listing on [carterjonas.co.uk](http://carterjonas.co.uk) or a separately available material information sheet, and we would advise you to confirm the details of any material information prior to any offer being submitted. You should not assume that the property has all necessary planning, building regulations or other consents and Carter Jonas has not tested any services, facilities, or equipment. Any measurements and distances given are approximate only. Where Carter Jonas has been provided with a floorplan by a third party, we cannot guarantee that the floorplan has been measured in accordance with IPMS. Purchasers or prospective tenants must satisfy themselves of all of the aforementioned by independent inspection or otherwise. Our images only represent part of the property as it appeared at the time they were taken and do not represent the furnishings included; these are confirmed in a separate inventory. If you require further information, please contact us. \*Administration fees may apply depending on tenancy type. Please contact your local branch for this information.