



CAMBRIDGE TERRACE, LONDON, NW1
£3,250 per week*

Carter Jonas

FLAT 9, CAMBRIDGE TERRACE, LONDON, NW1 4JL

- Overlooking Regent's Park
- Two large reception rooms with west-facing views
- Master bedroom suite plus three additional bedrooms
- Kitchen with utility area at the rear
- Lift access and designated underground parking space
- Access to private gardens of Park Square and Park Crescent

THE PROPERTY

The generously proportioned lateral layout comprises ten windows offering breathtaking views of the park and has been refurbished to an excellent standard.

It includes two large reception rooms with west-facing views over the greenery, a master bedroom suite, three further bedrooms, and a kitchen with a utility area at the rear.

In addition, the apartment benefits from lift access, a designated underground parking space, and access to the exclusive gardens of Park Square and Park Crescent.

Please note, parking is available but not included in the asking price.

Cambridge Terrace is a picturesque street located in the heart of London, close to the scenic Regent's Park. This charming area boasts beautiful Victorian architecture and offers easy access to vibrant local cafes and shops. The nearest train stations include Paddington Station, approximately 0.7 miles away, which provides national and international links, and Edgware Road Station, roughly 0.5 miles away, serving the Bakerloo Line and offering convenient underground travel.

Holding deposit is 1 week's rent = £3,250 (at asking price)

Security deposit is 6 week's rent = £19,500 (at asking price £3,250pw)

Minimum Term 12 months

Council Tax Band H

Bright and newly refurbished lateral flat with stunning views of Regents Park.



For the latest information on broadband and mobile coverage, please visit [/checker.ofcom](https://www.checker.ofcom.gov.uk/) for the most up-to-date details.

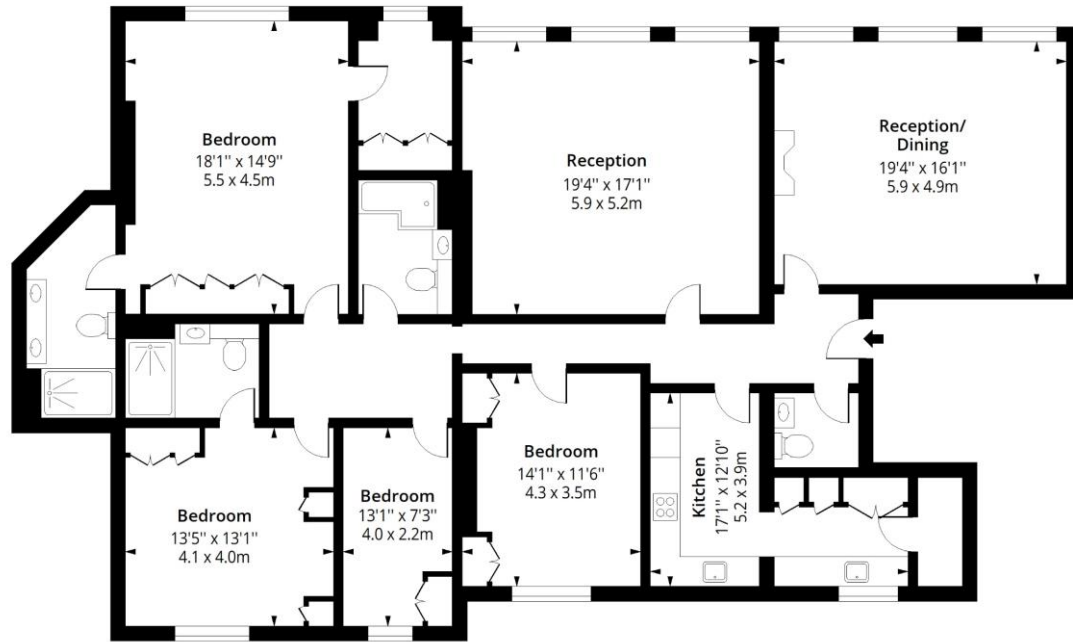
ADDITIONAL INFORMATION

Offers	Available for a minimum term of 12 months longer terms will be considered
Viewing	Strictly by appointment
Local Authority	Camden Council - Council Tax Band H



Cambridge Terrace, NW1

Approx. Gross Internal Area 2164 Sq Ft - 201.04 Sq M



Third Floor

Floor Area 2164 Sq Ft - 201.04 Sq M



Measured according to RICS IPMS2. Floor plan is for illustrative purposes only and is not to scale. Every attempt has been made to ensure the accuracy of the floor plan shown, however all measurements, fixtures, fittings and data shown are an approximate interpretation for illustrative purposes only. 1 sq m = 10.76 sq feet.

lpaplus.com

Date: 3/5/2025

T: 020 7486 8866

37 New Cavendish Street, London, W1G 9TL

E: marylebone.lettings@carterjonas.co.uk

A member of



Exclusive UK affiliate of

CHRISTIE'S
INTERNATIONAL REAL ESTATE

Classification L2 - Business Data



IMPORTANT INFORMATION

These particulars are for general information purposes only and do not represent an offer or contract or part of one. Carter Jonas or anyone in their employment has made every attempt to ensure that the particulars and other information provided are as accurate as possible and they are not intended to amount to advice on which you should rely as being factually accurate. Full information which may be relevant to your decision regarding the property can be found on the property listing on carterjonas.co.uk or a separately available material information sheet, and we would advise you to confirm the details of any material information prior to any offer being submitted. You should not assume that the property has all necessary planning, building regulations or other consents and Carter Jonas has not tested any services, facilities, or equipment. Any measurements and distances given are approximate only. Where Carter Jonas has been provided with a floorplan by a third party, we cannot guarantee that the floorplan has been measured in accordance with IPMS. Purchasers or prospective tenants must satisfy themselves of all of the aforementioned by independent inspection or otherwise. Our images only represent part of the property as it appeared at the time they were taken and do not represent the furnishings included; these are confirmed in a separate inventory. If you require further information, please contact us. *Administration fees may apply depending on tenancy type. Please contact your local branch for this information.