



**ROBERT ADAM STREET, MARYLEBONE, W1U**  
£460 per week\*

**Carter Jonas**



## FLAT D, ROBERT ADAM STREET, MARYLEBONE, LONDON, W1U 3HN

- Professionally managed by The Portman Estate.
- Complimentary membership to Portman Concierge.
- Self-Contained Studio Apartment
- Separate Kitchen
- Shower Room
- Second Floor
- Unfurnished (or furnished at separate cost)

### THE PROPERTY

Discover this bright, self-contained studio apartment on Robert Adam Street. Featuring a spacious layout, a fully fitted separate kitchen, and a modern bathroom with a shower. Located on the second floor, it's perfect for comfortable city living in a convenient, vibrant area.

The property is professionally managed by The Portman Estate.

Available for long term rental on an unfurnished basis, or furnished (at separate cost)

Complimentary membership to Portman Concierge.

Robert Adam Street is a charming thoroughfare located in the heart of London. Named after the renowned Scottish architect, it exudes elegance and architectural beauty. Lined with Georgian-style houses, the street offers a glimpse into London's historic past. With its picturesque setting and proximity to notable landmarks, it remains a sought-after destination for residents and visitors alike. Transport links are excellent from nearby with Bond Street station (approximately 0.4 miles) and Baker Street station (approximately 0.5 miles).

The Portman Estate is a prestigious property portfolio located in the heart of central London, covering 110 acres of prime real estate in Marylebone. Renting through The Portman Estate comes with the advantage of an in-house property management team, providing responsive, hands-on service to ensure residents' needs are met quickly and efficiently. This dedicated team helps maintain the quality of living, handling everything from routine maintenance to emergency repairs, making the rental experience hassle-free.

## Bright second floor, self-contained studio apartment.



Holding deposit is 1 week's rent = £460pw (at asking price)

Security deposit is 5 week's rent = £2,300 (at asking price £460pw)

Minimum Term 12 months

Council Tax Band D

For the latest information on broadband and mobile coverage, please visit [/checker.ofcom](http://checker.ofcom) for the most up-to-date details.

## ADDITIONAL INFORMATION

Offers	Available for a minimum term of 12 months longer terms will be considered
--------	---

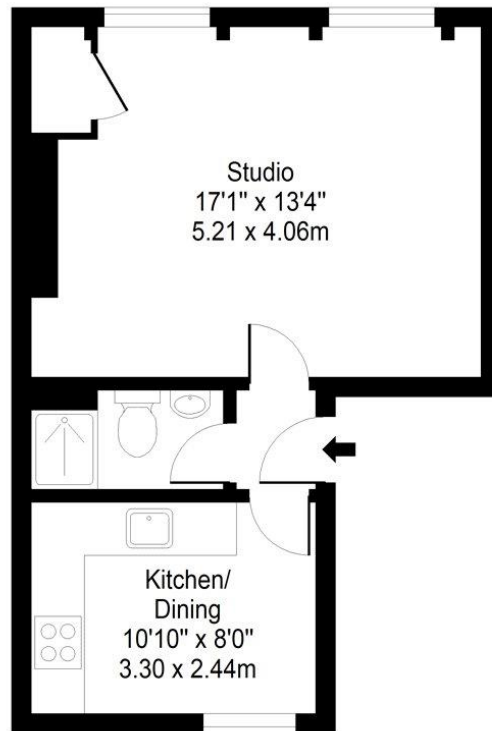
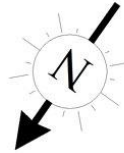
Viewing	Strictly by appointment
---------	-------------------------

Local Authority	Westminster City Council - Council Tax Band D
-----------------	---





ROBERT ADAM STREET



## Second Floor

Approx. Gross Internal Area 362 Sq Ft - 33.62 Sq M

For Illustrative Purposes Only - Not To Scale

[www.lpaplus.com](http://www.lpaplus.com)

**T: 020 7486 8866**

37 New Cavendish Street, London, W1G 9TL

E: [marylebone.lettings@carterjonas.co.uk](mailto:marylebone.lettings@carterjonas.co.uk)

A member of



Energy Efficiency Rating		
	Current	Potential
Very energy efficient - lower running costs		
(92+) <b>A</b>		
(81-91) <b>B</b>		
(69-80) <b>C</b>		79
(55-68) <b>D</b>	66	
(39-54) <b>E</b>		
(21-38) <b>F</b>		
(1-20) <b>G</b>		
Not energy efficient - higher running costs		
<b>England, Scotland &amp; Wales</b> EU Directive 2002/91/EC		

### IMPORTANT INFORMATION

These particulars are for general information purposes only and do not represent an offer or contract or part of one. Carter Jonas or anyone in their employment has made every attempt to ensure that the particulars and other information provided are as accurate as possible and they are not intended to amount to advice on which you should rely as being factually accurate. Full information which may be relevant to your decision regarding the property can be found on the property listing on [carterjonas.co.uk](http://carterjonas.co.uk) or a separately available material information sheet, and we would advise you to confirm the details of any material information prior to any offer being submitted. You should not assume that the property has all necessary planning, building regulations or other consents and Carter Jonas has not tested any services, facilities, or equipment. Any measurements and distances given are approximate only. Where Carter Jonas has been provided with a floorplan by a third party, we cannot guarantee that the floorplan has been measured in accordance with IPMS. Purchasers or prospective tenants must satisfy themselves of all of the aforementioned by independent inspection or otherwise. Our images only represent part of the property as it appeared at the time they were taken and do not represent the furnishings included; these are confirmed in a separate inventory. If you require further information, please contact us. \*Administration fees may apply depending on tenancy type. Please contact your local branch for this information.