



GLOUCESTER PLACE, LONDON, W1U
£1,050 per week*

Carter Jonas

FLAT 1, GLOUCESTER PLACE, LONDON, W1U 8HW

- 3 Bedrooms
- 3 Bathrooms
- 1 Reception Room
- Kitchen
- Private Terrace
- Unfurnished or furnished at extra cost

THE PROPERTY

This spacious property boasts three generously sized double bedrooms, including one with an en-suite bathroom.

The modern and stylish bathrooms have been fitted with high-quality fixtures and finishes. The reception room features beautiful wood flooring and leads out onto a terrace, perfect for enjoying the outdoors. The fully fitted kitchen is separate, offering ample space for cooking and entertaining.

In addition, this property offers a large wine cellar, providing an ideal storage solution for wine enthusiasts.

The property is professionally managed by The Portman Estate.

Available now for long term rental on an unfurnished basis, or furnished via separate negotiation.

Complimentary membership to Portman Concierge.

Gloucester Place is ideally situated for the retail and entertainment options in Marylebone and St. Johns Wood, all of which are only 0.7 miles away, as well as the natural areas of close-by Regent's Park. It is situated just north of Dorset Square (approximately 320 meters). Marylebone Station, which serves the Jubilee, Bakerloo, Metropolitan, Circle, Hammersmith, and City lines, is conveniently situated (approximately 0.2 miles away), as is Baker Street Underground Station.

The Portman Estate is a prestigious property portfolio located in the heart of central London, covering 110 acres of prime real estate in Marylebone. Renting through The Portman Estate comes with the advantage of an in-house property management team, providing

This three bedroom apartment is recently re-decorated and has the rare benefit of a large private terrace, in a great location close to Marylebone High Street and Baker Street station.



responsive, hands-on service to ensure residents' needs are met quickly and efficiently. This dedicated team helps maintain the quality of living, handling everything from routine maintenance to emergency repairs, making the rental experience hassle-free.

Holding deposit is 1 week's rent = £1,050 (at asking price)

Security deposit is 6 week's rent = £6,300 (at asking price £1,050pw)

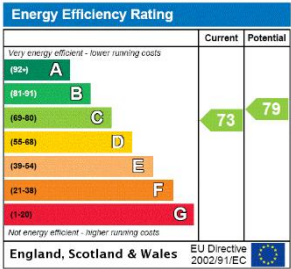
Minimum term 12 months

Council Tax Band F

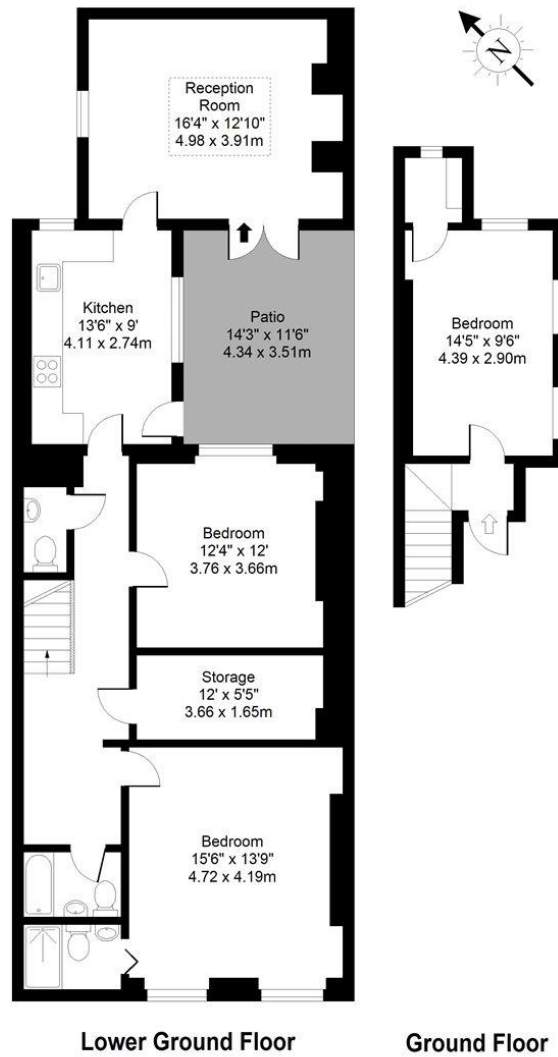
For the latest information on broadband and mobile coverage, please visit /checker.ofcom for the most up-to-date details.

ADDITIONAL INFORMATION

| | |
|-----------------|---|
| Offers | Available for a minimum term of 12 months longer terms will be considered |
| Viewing | Strictly by appointment |
| Local Authority | Westminster City Council - Council Tax Band F |



GLOUCESTER PLACE



IMPORTANT INFORMATION

These particulars are for general information purposes only and do not represent an offer or contract or part of one. Carter Jonas or anyone in their employment has made every attempt to ensure that the particulars and other information provided are as accurate as possible and they are not intended to amount to advice on which you should rely as being factually accurate. Full information which may be relevant to your decision regarding the property can be found on the property listing on carterjonas.co.uk or a separately available material information sheet, and we would advise you to confirm the details of any material information prior to any offer being submitted. You should not assume that the property has all necessary planning, building regulations or other consents and Carter Jonas has not tested any services, facilities, or equipment. Any measurements and distances given are approximate only. Where Carter Jonas has been provided with a floorplan by a third party, we cannot guarantee that the floorplan has been measured in accordance with IPMS. Purchasers or prospective tenants must satisfy themselves of all of the aforementioned by independent inspection or otherwise. Our images only represent part of the property as it appeared at the time they were taken and do not represent the furnishings included; these are confirmed in a separate inventory. If you require further information, please contact us. ***Administration fees may apply depending on tenancy type. Please contact your local branch for this information.**

T: 020 7486 8866

37 New Cavendish Street, London, W1G 9TL

E: marylebone.lettings@carterjonas.co.uk

A member of



Exclusive UK affiliate of

CHRISTIE'S
INTERNATIONAL REAL ESTATE