



**TAUNTON PLACE, LONDON, NW1**  
£650 per week\*

**Carter Jonas**

---

## **FLAT 9 BALCOMBE HOUSE, TAUNTON PLACE, LONDON, NW1 6HA**

- One bedroom
- 1 Bathroom
- 1 Reception Room
- Third Floor
- Unfurnished or furnished
- Short walk to Marylebone Station and Baker Street

### **THE PROPERTY**

This bright one-bedroom apartment is finished to a high standard and comprises one double bedroom with fitted wardrobe, modern bathroom suite, reception room with wooden flooring and a separate fitted kitchen.

Offered furnished or unfurnished.

Nestled in the heart of London, Taunton Place captivates with its blend of historic allure and modern vibrancy. Victorian architecture lines the streets, complemented by lush greenery. Charming local shops and cafes invite exploration, creating a warm and inviting atmosphere for residents and visitors alike in this delightful London neighbourhood. You can access every part of London from Baker Street station (0.5 miles) and Edgware Road station (0.6 miles).

Holding deposit is 1 week's rent = £650 (at asking price)

Security deposit is 5 week's rent = £3,250 (at asking price £650pw)

Minimum Term 12 months

Council Tax Band D

For the latest information on broadband and mobile coverage, please visit [/checker.ofcom](https://checker.ofcom.gov.uk/) for the most up-to-date details.

**Modern one bedroom apartment which was refurbished recently to a high standard and is situated conveniently for Marylebone Station.**

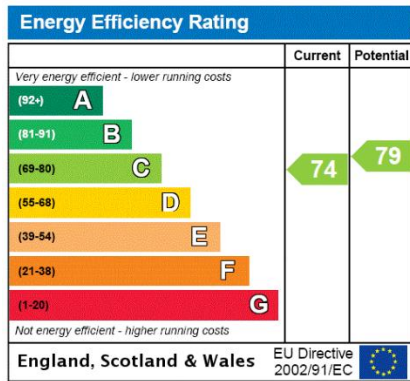


## ADDITIONAL INFORMATION

Offers Available for a minimum term of 12 months longer terms will be considered

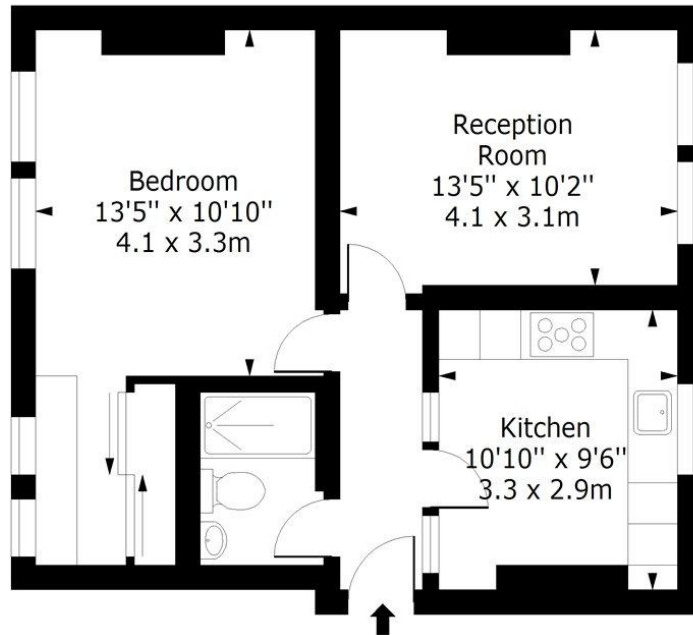
Viewing Strictly by appointment

Local Authority City of Westminster - Selective Licences - Council Tax Band D



# Balcombe House, NW1

Approx. Gross Internal Area 559 Sq Ft - 51.93 Sq M



## Third Floor

Floor Area 559 Sq Ft - 51.93Sq M

For Illustration Purposes Only - Not To Scale  
[www.lpaplus.com](http://www.lpaplus.com)



T: 020 7486 8866

37 New Cavendish Street, London, W1G 9TL

E: [marylebone.lettings@carterjonas.co.uk](mailto:marylebone.lettings@carterjonas.co.uk)

A member of



Exclusive UK affiliate of

**CHRISTIE'S**  
INTERNATIONAL REAL ESTATE

Classification L2 - Business Data

### IMPORTANT INFORMATION

These particulars are for general information purposes only and do not represent an offer or contract or part of one. Carter Jonas or anyone in their employment has made every attempt to ensure that the particulars and other information provided are as accurate as possible and they are not intended to amount to advice on which you should rely as being factually accurate. Full information which may be relevant to your decision regarding the property can be found on the property listing on [carterjonas.co.uk](http://carterjonas.co.uk) or a separately available material information sheet, and we would advise you to confirm the details of any material information prior to any offer being submitted. You should not assume that the property has all necessary planning, building regulations or other consents and Carter Jonas has not tested any services, facilities, or equipment. Any measurements and distances given are approximate only. Where Carter Jonas has been provided with a floorplan by a third party, we cannot guarantee that the floorplan has been measured in accordance with IPMS. Purchasers or prospective tenants must satisfy themselves of all of the aforementioned by independent inspection or otherwise. Our images only represent part of the property as it appeared at the time they were taken and do not represent the furnishings included; these are confirmed in a separate inventory. If you require further information, please contact us. \*Administration fees may apply depending on tenancy type. Please contact your local branch for this information.