

**BULL INN CLOSE**  
Weedon, Northamptonshire

**Carter Jonas**

# APARTMENT 5 BULL INN CLOSE WEEDON NORTHAMPTONSHIRE NN7 4GD

## STUNNING SECOND FLOOR APARTMENT IN A CONVERTED FARMHOUSE FORMING PART OF A SMALL DEVELOPMENT OF QUALITY PROPERTIES.

Reception Dining Hall · Sitting Room · Fitted Kitchen  
Principal Bedroom with Shower Room En Suite · Double  
Bedroom · Bathroom · Gas Central Heating · Allocated  
Parking

EPC rating C

### DESCRIPTION

The Farmhouse was converted around 8 years ago and now comprises five luxury apartments with the benefit of a communal garden and parking.

The apartment provides tastefully appointed and generously proportioned accommodation with a great deal of charm and character. Period features include beamed ceilings and exposed rustic brick walls and the property is presented in excellent order throughout.

### ACCOMMODATION

The reception and dining room provides an ideal dining space and opens to the spacious sitting room with a feature rustic brick chimney and fire surround with space for an electric log burner.

Well fitted kitchen comprising base and wall units which incorporate oven, hob, dishwasher, washer drier and fridge freezer.

Spacious principal bedroom with shower room en suite comprising contemporary wall hung vanity basin, low level WC and shower cubicle. Designer chrome radiator and

complimentary wall and floor tiling.

A large double second bedroom and bathroom fitted with a panelled bath, wall hung vanity basin, low level WC and shower cubicle. Designer chrome radiator and complimentary wall and floor tiling.

### LOCATION

Weedon has a number of pubs, cafes, a general store and antique shops. The village also has a primary school, doctor's surgery and dentist. Weedon Depot is within walking distance with its Craft brewery, fitness studio and climbing centre and Heart of the Shires shopping village is also nearby with a number of independant shops and a tea room.

- Long Buckby Railway Station 5 miles  
(Birmingham New Street 50 minutes/London Euston 67 minutes)
- Northampton Railway Station 9 miles  
(London Euston 46 minutes)
- M1 (Junction16) 4 miles

All times and distances approximate

## ADDITIONAL INFORMATION

**Leasehold:** 125 years from 2013/2104

**Service Charge** £1,860/annum

**Ground Rent** £250/annum

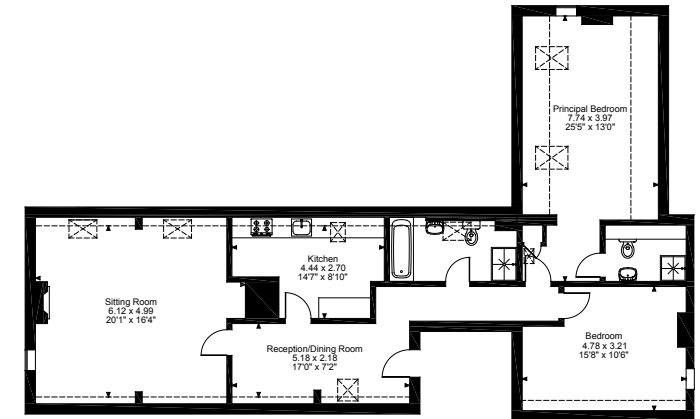
**Northampton 01604 608200**

northampton@carterjonas.co.uk

12 Waterside Way, Bedford Road, Northampton NN4 7XD



Weedon, 5 Bull Inn Close Weedon,  
Northampton, Northamptonshire  
Approximate Gross Internal Area  
102 Sq M/1098 Sq Ft



Second Floor

Please note that the location of doors, windows and other items are approximate and this floorplan is to be used for illustrative purposes only. Unauthorized reproduction is prohibited.



**carterjonas.co.uk**

Offices throughout the UK

### IMPORTANT INFORMATION

Our property particulars do not represent an offer or contract, or part of one. The information given is without responsibility on the part of the agents, seller(s) or lessor(s) and you should not rely on the information as being factually accurate about the property, its condition or its value. Neither Carter Jonas LLP nor anyone in its employment or acting on its behalf has authority to make any representation or warranty in relation to this property. We have not carried out a detailed survey, nor tested the services, appliances or fittings at the property. The images shown may only represent part of the property and are as they appeared at the time of being photographed. The areas, measurements and distances are approximate only. Any reference to alterations or use does not mean that any necessary planning permission, building regulation or other consent has been obtained. The VAT position relating to the property may change without notice.