



76 MILTON STREET NORTHAMPTON NN2 7JF

Entrance Hallway · Sitting & Dining Room · Kitchen
WC · Cellar · Two Double Bedrooms · Dressing Room
Study · Shower Room · Rear Garden
EPC rating E

ACCOMMODATION

Entrance hallway giving access into the sitting dining room with open fireplace and surround. The dining area has ample room for dining table and chairs with upvc double glazed door giving access to the rear garden.

The kitchen is fitted with a range of matching wall and base units with a sink and drainer with mixer tap. Integrated Bosch oven, electric hob and extractor over. Space and plumbing for appliances. Large wall mounted display unit.

Step down into rear lobby and door into the WC and further upvc glazed door to rear garden. Access to the cellar is from the kitchen.

The first floor comprises two double bedrooms with the third currently used as a study. This room gives access to the shower room and could be used as a dressing room.

The shower room comprises a black bowl basin with drawer units under and WC. Double shower enclosure and door to airing cupboard which houses the gas boiler.

OUTSIDE

The rear garden is fully enclosed with brick and paved areas and an external water tap.

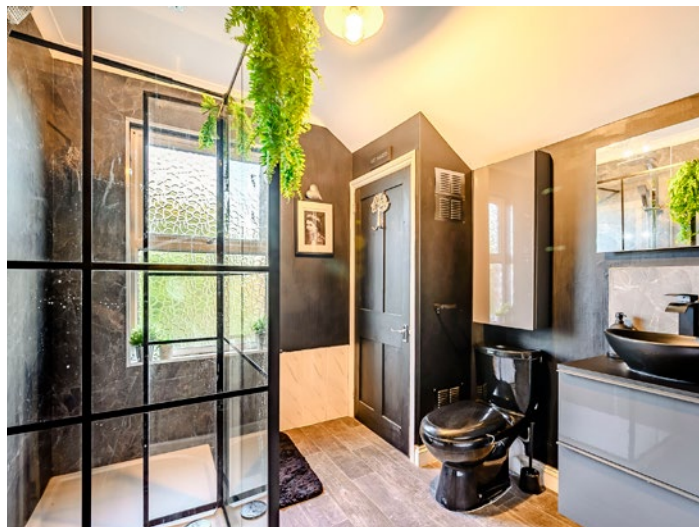
SPACIOUS PERIOD TOWN HOUSE SITUATED IN A POPULAR NORTHAMPTON LOCATION WITH 2/3 BEDROOMS AND REAR GARDEN.



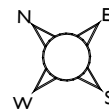
LOCATION

Located within the popular area of Poets Corner close to a wealth of amenities located on Kingsley Park Terrace including shops, pubs and restaurants. The Racecourse is also close by which is a large green open space with sporting facilities and children's play area.

Northampton town centre is around a mile away with additional shops and entertainment venues together with the Railway Station with a mainline service to London Euston in around 46 minutes.



76, Milton Street, Northampton, Northamptonshire
Approximate Gross Internal Area
106 Sq M/1141 Sq Ft



Cellar

Ground Floor

First Floor

Please note that the location of doors, windows and other items are approximate and this floorplan is to be used for illustrative purposes only. Unauthorized reproduction is prohibited.



Northampton 01604 608200

northampton@carterjonas.co.uk

12 Waterside Way, Bedford Road, Northampton NN4 7XD

carterjonas.co.uk

Offices throughout the UK

IMPORTANT INFORMATION

These particulars are for general information purposes only and do not represent an offer of contract or part of one. Carter Jonas has made every attempt to ensure that the particulars and other information provided are as accurate as possible and are not intended to amount to advice on which you should rely as being factually accurate. You should not assume that the property has all necessary planning, building regulations or other consents and Carter Jonas have not tested any services, facilities or equipment. Any measurements and distances given are approximate only. Purchasers must satisfy themselves of all of the aforementioned by independent inspection or otherwise. Although we make reasonable efforts to update our information, neither Carter Jonas LLP nor anyone in its employment or acting on its behalf makes any representations warranties or guarantees, whether express or implied, in relation to the property, or that the content in these particulars is accurate, complete or up to date. Our images only represent part of the property as it appeared at the time they were taken. If you require further information please contact us.