



**MILL LANE, CHALGROVE**  
Guide price £425,000

**Carter Jonas**



## JOHN HAMPDEN COTTAGE, 73 MILL LANE, CHALGROVE, OX44 7SL

A charming Grade II listed detached thatched cottage situated in this popular village, just over 9 miles from Oxford and 10 minutes from the M40.

The property is set towards the back of the plot and enjoys views to the rear over open fields

The accommodation boasts a wealth of character with exposed timbers evident both internally and externally.

The ground floor accommodation comprises a hall, sitting room, kitchen/dining room, bedroom, and shower room with the first floor providing a large landing and a further bedroom.

The gardens approach 0.2 acres and are mainly lawned with established trees and shrubs. There is a single garage and driveway for 2 cars.

The village itself has a wealth of traditional cottages, a thriving local community, a primary school, and many wonderful countryside walks right on the doorstep. The cottage is named after John Hampden, an eminent politician who fought in the Battle of Chalgrove Field in 1643 during the First English Civil War. at the time who fought in the war.

**A CHARMING TWO BEDROOM DETACHED THATCHED GRADE II LISTED COTTAGE IN NEED OF UPDATING, SET IN GROUNDS APPROACHING 0.2 OF AN ACRE.**

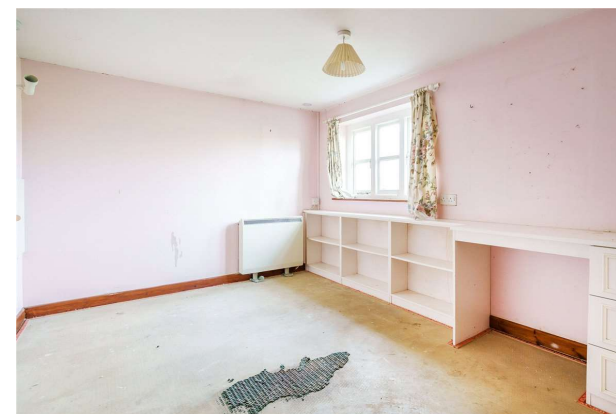


- Detached thatched cottage
- Grade II listed
- 2 bedrooms
- In need of updating
- Grounds approaching 0.2 acres.
- Garage
- Popular village location.

**TENURE** Freehold

**LOCAL AUTHORITY** South Oxfordshire District Council

**COUNCIL TAX BAND** D



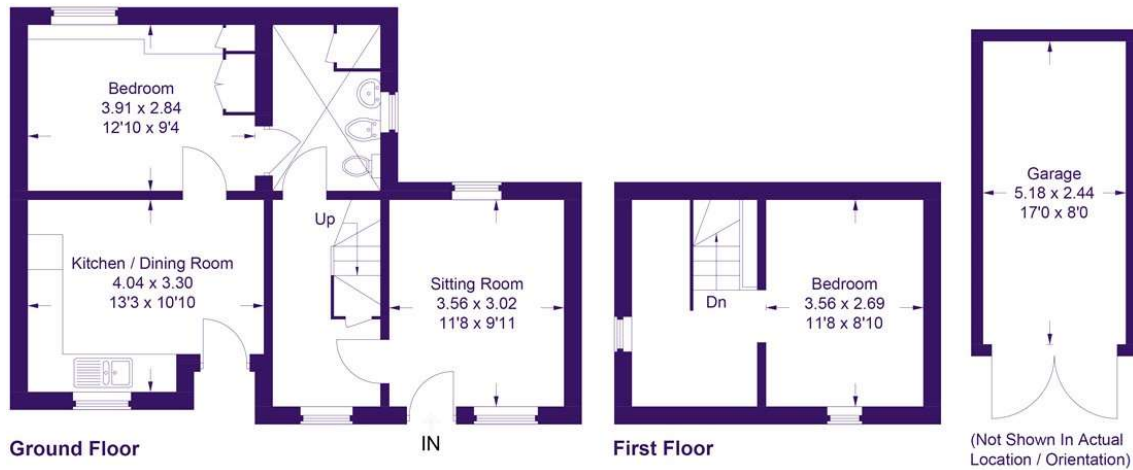






## John Hampden Cottage, 73 Mill Lane

Approximate Gross Internal Area  
Ground Floor = 48.9 sq m / 526 sq ft  
First Floor = 17.7 sq m / 190 sq ft  
Garage = 12.7 sq m / 137 sq ft  
Total = 79.3 sq m / 853 sq ft



This plan is for layout guidance only. Not drawn to scale unless stated. Windows and door openings are approximate. Whilst every care is taken in the preparation of this plan, please check all dimensions, shapes and compass bearings before making any decisions reliant upon them.  
© CJ Property Marketing Ltd Produced for Carter Jonas



Oxford 01865 511444

oxford@carterjonas.co.uk  
Mayfield House, 256 Banbury Road, Oxford, OX2 7DE

**carterjonas.co.uk**  
Offices throughout the UK

Energy Efficiency Rating		Current	Potential
Best energy efficiency - lower running costs			
A			
B			
C			
D			
E			
F			
G			
Low energy efficiency - higher running costs			
England, Scotland & Wales		EU Directive 2002/91/EC	

### IMPORTANT INFORMATION

These particulars are for general information purposes only and do not represent an offer of contract or part of one. Carter Jonas has made every attempt to ensure that the particulars and other information provided are as accurate as possible and are not intended to amount to advice on which you should rely as being factually accurate. You should not assume that the property has all necessary planning, building regulations or other consents and Carter Jonas have not tested any services, facilities or equipment. Any measurements and distances given are approximate only. Purchasers must satisfy themselves of all of the aforementioned by independent inspection or otherwise. Although we make reasonable efforts to update our information, neither Carter Jonas LLP nor anyone in its employment or acting on its behalf makes any representations warranties or guarantees, whether express or implied, in relation to the property, or that the content in these particulars is accurate, complete or up to date. Our images only represent part of the property as it appeared at the time they were taken. If you require further information please contact us.