



SOUTHFIELDS

WESTON-ON-THE-GREEN

Plot 5: THE WOODSTOCK



THE WOODSTOCK

Bedrooms: 4 | **Plot:** 5 | **Garage:** Single

Internal Living Area: 214m² | 2,303sq ft² **Garage Area:** 16m² | 172sq ft² **Total Area:** 230m² | 2,475sq ft²

A perfect blend of country charm and modern comfort, The Woodstock is a timelessly beautiful country home with four bedrooms and an abundance of living space. Styled in mellow Cotswold stone and sporting a traditional red tiled roof, it's a great looker inside and out.

Perfect for family life, The Woodstock's ground floor includes a spacious sitting room with doors opening onto the garden and a separate home office/family room adding space to play or work. The airy kitchen-diner has bifold doors opening onto the rear garden, guaranteeing lovely views and creating a perfect opportunity for alfresco drinks in the summer – or you could simply relax in the dining room and watch the children play outside.

Upstairs, the four double bedrooms come with ample storage, and you'll also have the comfort of two en-suite bathrooms along with a large family bathroom. If you outgrow the four bedrooms, we've designed the loft to be easy and affordable to convert.



THE WOODSTOCK

Bedrooms: 4 | **Plot:** 5 | **Garage:** Single

Internal Living Area: 214m² | 2,303sq ft² **Garage Area:** 16m² | 172sq ft² **Total Area:** 230m² | 2,475sq ft²



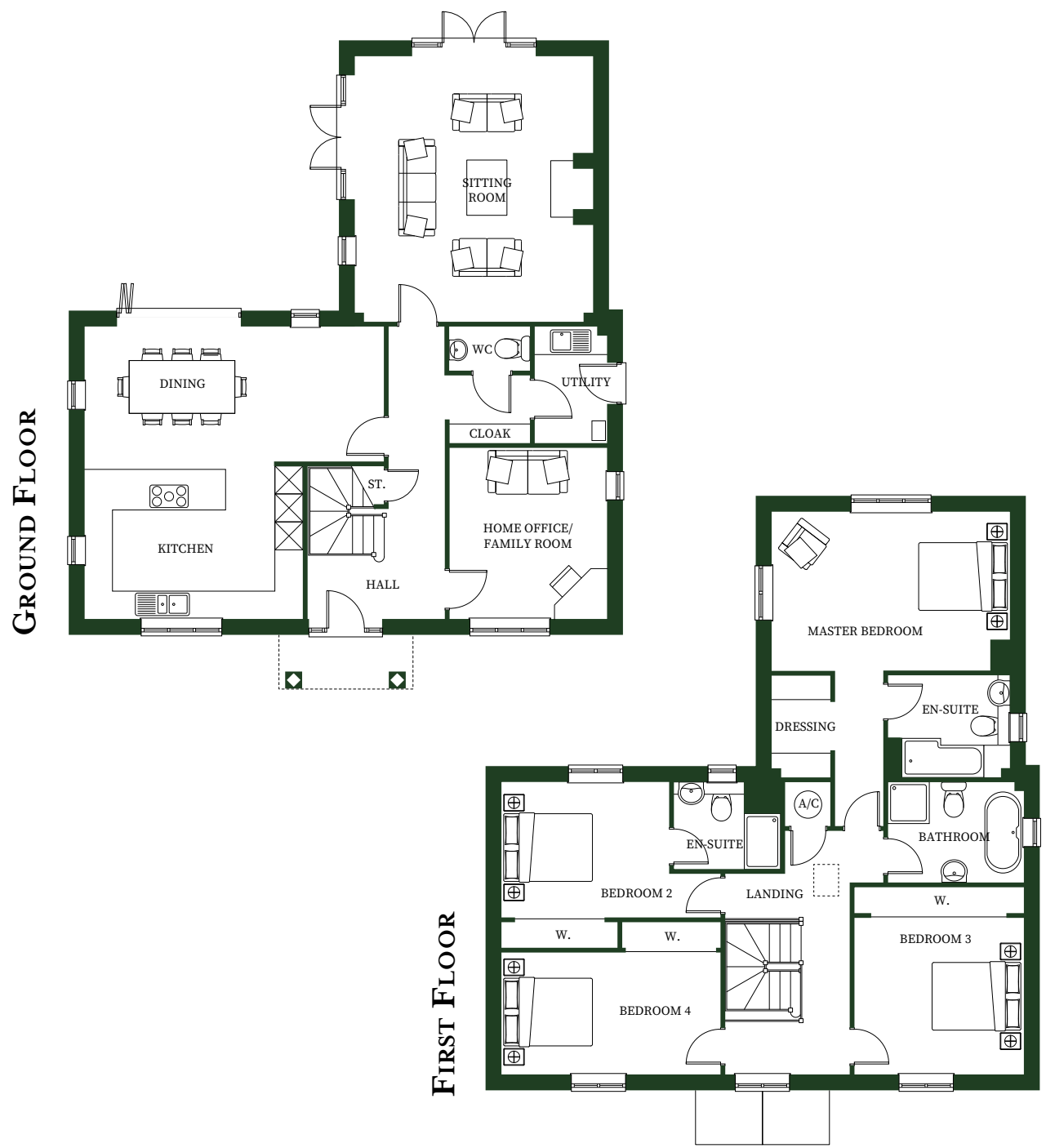
GROUND FLOOR

Sitting Room	5.25m x 5.85m	17'3" x 19'2"
Kitchen / Dining	6.60m* x 6.45m	21'8" x 21'2"
Utility	1.58m x 2.55m	5'2" x 8'4"
WC	1.75m x 0.95m	5'9" x 3'1"
Home Office / Family Room	3.45m x 3.75m	11'4" x 12'4"
Garage	2.77m x 5.89m	9'1" x 19'4"

FIRST FLOOR

Master Bedroom	5.25m x 3.50m*	17'3" x 11'6"
En-Suite	2.68m x 2.25m	8'10" x 7'5"
Wardrobe	1.28m x 2.25m	4'2" x 7'5"
Bedroom 2	3.70m* x 2.98m*	12'2" x 9'9"
En-Suite	2.35m x 1.90m	7'9" x 6'3"
Bedroom 3	3.73m x 3.45m*	12'3" x 11'4"
Bedroom 4	4.84m x 2.68m*	15'11" x 8'10"
Bathroom	2.98m x 2.20m	9'9" x 7'3"

Internal floorplans may be subject to alteration. *Dimensions listed are maximum and approximate. Computer Generated Images are for illustrative purposes only.
Fitted wardrobes to Master Bedroom and Bedroom 2 as standard.



YOUR STANDARD SPECIFICATION

KITCHEN/UTILITY

- Bespoke fitted kitchen with worktop and upstand. Under mounted stainless-steel sink with drainer and chrome mixer tap.
- Fully integrated appliances including Fridge/ Freezer, Oven, 5 burner Gas hob, Microwave, Dishwasher and Cooker hood.

BATHROOMS, EN-SUITES & W/C

- Contemporary suspended sanitaryware
- Vanity unit with sink and waterfall mixer tap. Waterfall taps to fitted baths
- Family Bathrooms feature a free-standing bath and separate shower
- Chrome wall-mounted towel rail

INTERNAL FINISHES

- Full panelled internal doors. Handmade oak staircase
- Fitted wardrobes to Master bedroom & one additional bedroom. Dressing rooms to Master bedroom
- Tiled flooring to Hallway, Kitchen, Diner, Utility and W/C. Half-height tiling to walls in Bathroom and En-suite.
- Fitted carpets to all bedrooms and first/second floor landings
- Attic trusses to allow for future loft conversions, subject to necessary planning permission

ELECTRICAL/LIGHTING & HEATING

- Satin chrome light switches & sockets with concealed fixings. Ceiling lights are pre-wired with bulb holder. TV/Satellite/Sky and Telephone points fitted to Dining Room, Sitting Room, Home Office and Master bedroom
- Underfloor heating throughout, with thermostat
- Fibre Optic Broadband

EXTERNAL FINISHES

- Natural stone finished properties.
- Hardwood framed double glazed windows with spray finish. Feature handmade oak porch
- Natural slate or clay roof tiles
- Front and rear garden taps. Turfed front & rear gardens. 1.8m boundary fencing. Paving to Bifold/Trifold/French door patio areas and front, side and rear pathways

SECURITY

- Protek 10 year new home warranty
- Fused spur for wireless alarm (alarm not fitted). Motion sensitive (PIR with override) lighting to front, rear and side of property.
- Ceiling mounted, mains connected smoke, heat and CO detectors to Hall, Landing, Kitchen & Utility

PLEASE NOTE:

*** The above standard specification is subject to manufacturer specification variances, product availability and the client selecting any relevant Choices within the specified construction timeframe. VR representations of the above specification are for illustrative purposes only



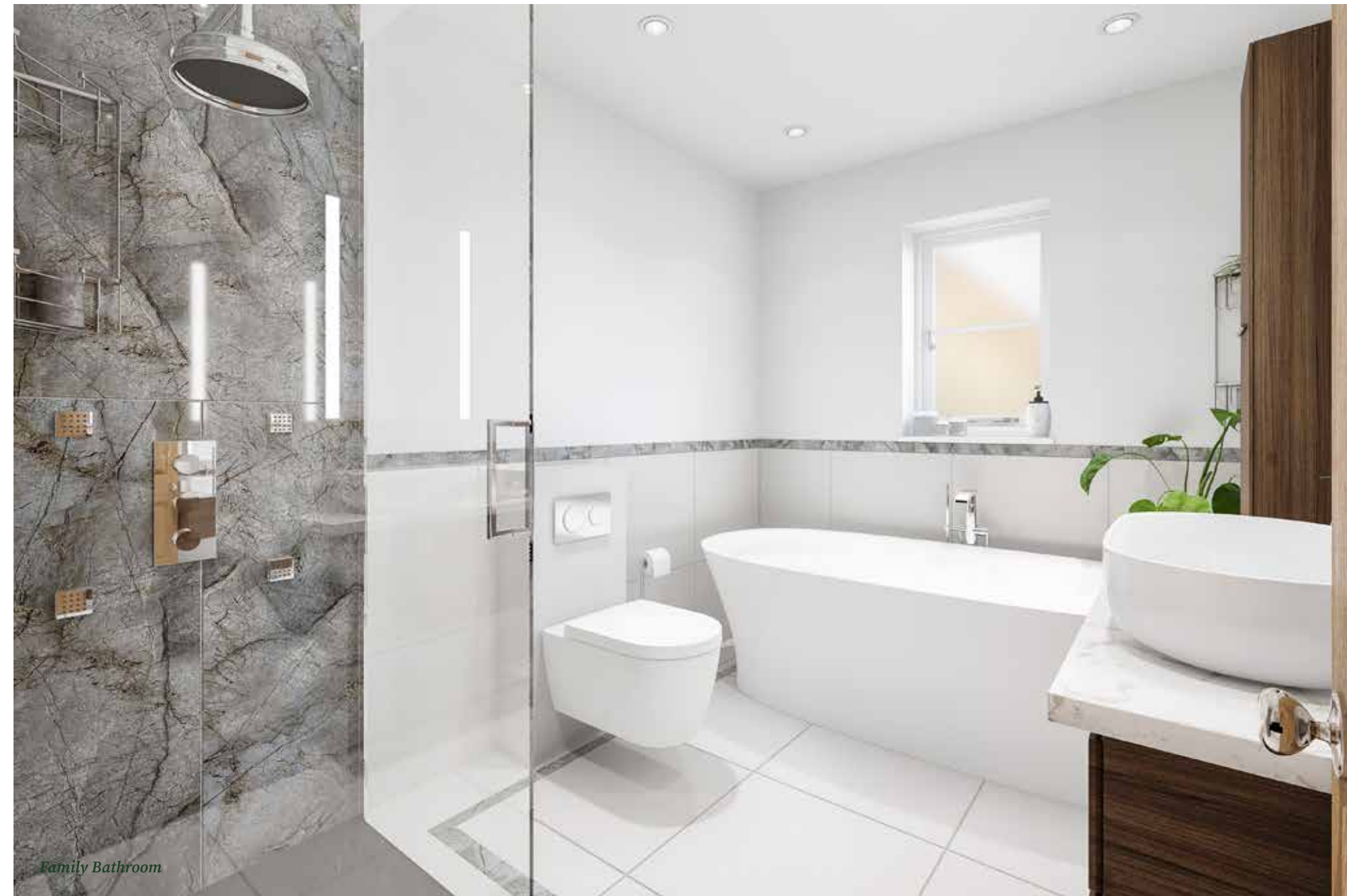
The Master Bedroom



Kitchen/Dining/Family



Sitting Room



Family Bathroom

SOUTHFIELDS

WESTON-ON-THE-GREEN



SAT NAV POSTCODE:
OX25 3RG


HAYDEN
HOMES

Web: www.haydenhomes.co.uk

The Developer reserves the right to make alterations to the specifications and elevational treatments without prior notice. These particulars are for guidance only and do not in any way form part of a warranty or guarantee.. Illustrations are of typical elevations. Please note that all dimensions indicated are approximate and plans are not shown to scale.

U-Vision, U-Create and U-Seal are trademarks of Hayden Homes Ltd

Design & Graphics by www.iCreate.co.uk