



THE CHILTERNS, GLOUCESTER GREEN, OX1
£1,595 per month*

Carter Jonas

THE CHILTERN, GLOUCESTER GREEN,

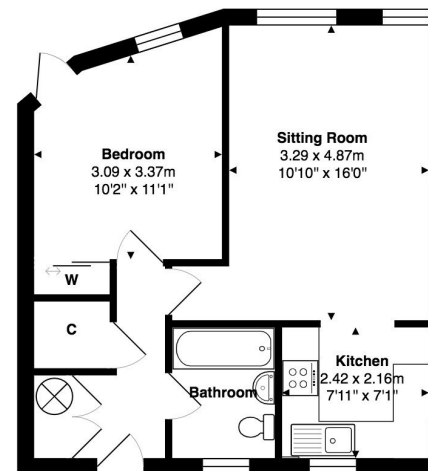
A One-bedroom upper floor city centre apartment at Gloucester located in central Oxford, The Chilterns at Gloucester Green is only 0.5 miles from the train station. Gloucester green has a weekly food market on Wednesdays and Saturdays. The apartment is one of the few on the development that benefits from a lift and indoor bicycle storage. The property consists of one double bedroom, a family bathroom and open plan style kitchen/living/dining area. The property does not have any allocated parking. Mains electricity connected to the property. No gas. Internet & Mobile: Further information on availability and speeds can be found at checker.ofcom.org.uk Flood risk: Zone 1 (low risk of flooding) The property is leasehold.

The property comes fully furnished. Available for a minimum term of 12 months from late July. Council tax band: E EPC rating: C At a rent of £1595.00 per month

Holding deposit 1 week rent: £368
Deposit 5 weeks rent: £1840

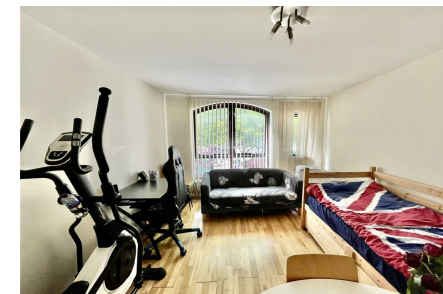
- Council Tax Band = E
- Deposit Required = £1,840.38
- Long Let, Minimum term 12 months
- EPC = C
- Gloucester Green
- Central location

Energy Efficiency Rating		
	Current	Potential
Very energy efficient - lower running costs		
(92-100) A		
(81-91) B		
(69-80) C	76	77
(55-68) D		
(39-54) E		
(21-38) F		
(1-20) G		
Not energy efficient - higher running costs		
England, Scotland & Wales	EU Directive 2002/91/EC	



Approx. Gross Internal Area: 44.8 m² ... 482 ft²

Whilst every attempt has been made to ensure the accuracy of the floor plan contained here, measurements of doors, windows, rooms, and any other items are approximate. No responsibility is taken for any error, omission, or mis-statement. This plan is for illustrative purposes only and should be used as such. Drawn by E8 Property Services. www.e8ps.co.uk



Oxford Lettings 01865 511444

oxford@carterjonas.co.uk

Mayfield House, 256 Banbury Road, Oxford, Oxfordshire, OX2 7DE



Exclusive UK affiliate of

CHRISTIE'S
INTERNATIONAL REAL ESTATE

Classification L2 - Business Data

IMPORTANT INFORMATION

These particulars are for general information purposes only and do not represent an offer or contract or part of one. Carter Jonas or anyone in their employment has made every attempt to ensure that the particulars and other information provided are as accurate as possible and they are not intended to amount to advice on which you should rely as being factually accurate. Full information which may be relevant to your decision regarding the property can be found on the property listing on carterjonas.co.uk or a separately available material information sheet, and we would advise you to confirm the details of any material information prior to any offer being submitted. You should not assume that the property has all necessary planning, building regulations or other consents and Carter Jonas has not tested any services, facilities, or equipment. Any measurements and distances given are approximate only. Where Carter Jonas has been provided with a floorplan by a third party, we cannot guarantee that the floorplan has been measured in accordance with IPMS. Purchasers or prospective tenants must satisfy themselves of all of the aforementioned by independent inspection or otherwise. Our images only represent part of the property as it appeared at the time they were taken and do not represent the furnishings included; these are confirmed in a separate inventory. If you require further information, please contact us. *Administration fees may apply depending on tenancy type. Please contact your local branch for this information.