

LONSDALE ROAD, OXFORD, OX2
£1,550 per month*

Carter Jonas

LONSDALE ROAD, OXFORD, OX2

A one bedroom first floor flat situated in Summertown close to local amenities, with easy access into the city centre.

Benefiting from it's own entrance is this one bedroom first floor apartment. Newly fitted kitchen with appliances. Bathroom with shower over bath. One double bedroom and a spacious living room with decorative feature fireplace. Prime Summertown location within walking distance to the shops and within cycling distance to the city centre. Property available from late September.

Mains electricity and water are connected to the property.

Internet & Mobile: Further information on availability and speeds can be found at checker.ofcom.org.uk

The property is Freehold.

Available from late September on an unfurnished basis for a minimum 10 months.

Flood zone 1: Low risk

Holding deposit = 1 weeks rent of £357.00

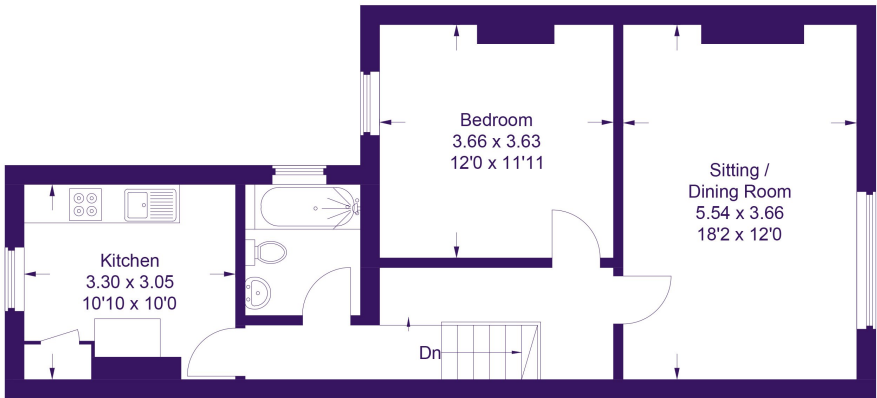
Deposit is 5 weeks rent (£1550pcm = £1788.00 deposit)

- Council Tax = C
- Deposit Required = £1,788.00
- Long Let, Minimum term 10 months
- 1 Bedroom
- Reception room
- 1 Bathroom
- Unfurnished
- EPC = E

Energy Efficiency Rating		
	Current	Potential
Very energy efficient - lower running costs		
(92-100) A		
(81-91) B		
(69-80) C		73
(55-68) D		
(39-54) E	44	
(21-38) F		
(1-20) G		
Not energy efficient - higher running costs		
England, Scotland & Wales		
EU Directive 2002/91/EC		

83A Lonsdale Road

Approximate Gross Internal Area
Ground Floor = 6.0 sq m / 64 sq ft
First Floor = 58.3 sq m / 627 sq ft
Total = 64.3 sq m / 691 sq ft



First Floor



Ground Floor

This plan is for layout guidance only. Not drawn to scale unless stated. Windows and door openings are approximate. Whilst every care is taken in the preparation of this plan, please check all dimensions, shapes and compass bearings before making any decisions reliant upon them.
© CJ Property Marketing Ltd Produced for Carter Jonas



Oxford Lettings 01865 511444

oxford@carterjonas.co.uk

Mayfield House, 256 Banbury Road, Oxford, Oxfordshire, OX2 7DE



Exclusive UK affiliate of

CHRISTIE'S
INTERNATIONAL REAL ESTATE

Classification L2 - Business Data

IMPORTANT INFORMATION

These particulars are for general information purposes only and do not represent an offer or contract or part of one. Carter Jonas or anyone in their employment has made every attempt to ensure that the particulars and other information provided are as accurate as possible and they are not intended to amount to advice on which you should rely as being factually accurate. Full information which may be relevant to your decision regarding the property can be found on the property listing on carterjonas.co.uk or a separately available material information sheet, and we would advise you to confirm the details of any material information prior to any offer being submitted. You should not assume that the property has all necessary planning, building regulations or other consents and Carter Jonas has not tested any services, facilities, or equipment. Any measurements and distances given are approximate only. Where Carter Jonas has been provided with a floorplan by a third party, we cannot guarantee that the floorplan has been measured in accordance with IPMS. Purchasers or prospective tenants must satisfy themselves of all of the aforementioned by independent inspection or otherwise. Our images only represent part of the property as it appeared at the time they were taken and do not represent the furnishings included; these are confirmed in a separate inventory. If you require further information, please contact us. *Administration fees may apply depending on tenancy type. Please contact your local branch for this information.