



**HEATHFIELD, BLETCHINGDON, OX5**  
£1,700 per month\*

**Carter Jonas**



# HEATHFIELD, BLETCHINGDON, OX5

A two bedroom furnished home situated in the hamlet of Heathfield, offering rural living and character features with the convenience of local amenities.

This two bedroom furnished home is situated in the Hamlet of Heathfield. The property comprises hallway into living/dining room with doors onto the rear garden and kitchen on the ground floor. The first floor offers generous double bedroom with en suite shower room, second bedroom and family bathroom. The property benefits from a private rear garden, communal garden, parking and storage shed.

Mains electricity and water are connected to the property. The rent is inclusive of water rates. Internet & Mobile: Further information on availability and speeds can be found at [checker.ofcom.org.uk](http://checker.ofcom.org.uk). The property is Freehold. Flood zone 1: Low risk

Available from 29th September on a furnished basis.

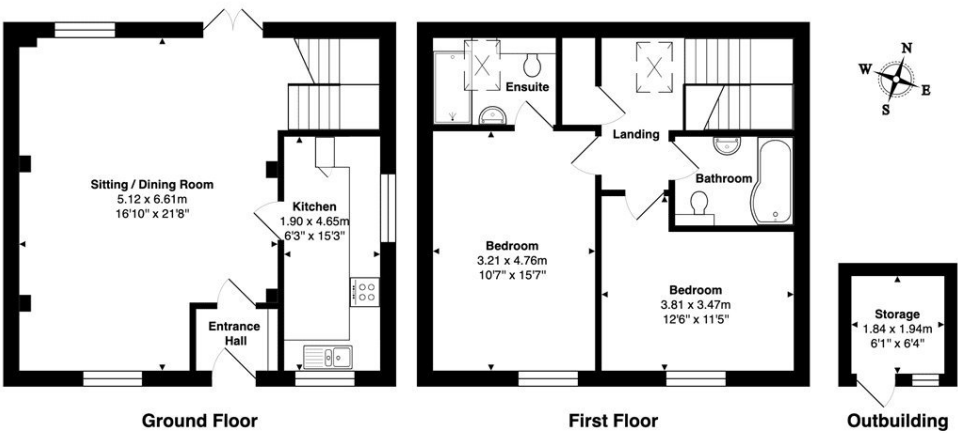
Minimum term 12 months.

Council Tax Band D - Cherwell District Council EPC - B

Holding deposit = 1 weeks rent (1,395 pcm) = £392.00

- Council Tax = D
- Deposit Required = £1,961.00
- Living/dining room
- 2 bedrooms
- 2 bathrooms
- private garden
- communal garden
- parking
- furnished
- EPC = D

Energy Efficiency Rating		
	Current	Potential
Very energy efficient - lower running costs		
(92-100) A		
(81-91) B		
(69-80) C		
(55-68) D		
(39-54) E		
(21-38) F		
(1-20) G		
Not energy efficient - higher running costs		
England, Scotland & Wales	EU Directive 2002/91/EC	



**Approx. Gross Internal Area:**  
Main House: 94.6 m<sup>2</sup> ... 1019 ft<sup>2</sup>  
Outbuilding: 3.6 m<sup>2</sup> ... 38 ft<sup>2</sup>  
Total: 98.2 m<sup>2</sup> ... 1057 ft<sup>2</sup>

Whilst every attempt has been made to ensure the accuracy of the floor plan contained here, measurements of doors, windows, rooms, and any other items are approximate. No responsibility is taken for any error, omission, or mis-statement. This plan is for illustrative purposes only and should be used as such.  
Drawn by E8 Property Services. [www.e8ps.co.uk](http://www.e8ps.co.uk)



**Oxford Lettings 01865 511444**  
[oxfordresilettings@carterjonas.co.uk](mailto:oxfordresilettings@carterjonas.co.uk)  
Mayfield House, 256 Banbury Road, Oxford, Oxfordshire, OX2 7DE



Exclusive UK affiliate of  
**CHRISTIE'S**  
INTERNATIONAL REAL ESTATE  
Classification L2 - Business Data

**IMPORTANT INFORMATION**  
These particulars are for general information purposes only and do not represent an offer or contract or part of one. Carter Jonas or anyone in their employment has made every attempt to ensure that the particulars and other information provided are as accurate as possible and they are not intended to amount to advice on which you should rely as being factually accurate. Full information which may be relevant to your decision regarding the property can be found on the property listing on [carterjonas.co.uk](http://carterjonas.co.uk) or a separately available material information sheet, and we would advise you to confirm the details of any material information prior to any offer being submitted. You should not assume that the property has all necessary planning, building regulations or other consents and Carter Jonas has not tested any services, facilities, or equipment. Any measurements and distances given are approximate only. Where Carter Jonas has been provided with a floorplan by a third party, we cannot guarantee that the floorplan has been measured in accordance with IPMS. Purchasers or prospective tenants must satisfy themselves of all of the aforementioned by independent inspection or otherwise. Our images only represent part of the property as it appeared at the time they were taken and do not represent the furnishings included; these are confirmed in a separate inventory. If you require further information, please contact us. \*Administration fees may apply depending on tenancy type. Please contact your local branch for this information.