



**LONSDALE ROAD, OXFORD, OX2**  
£3,000 per month\*

**Carter Jonas**



# LONSDALE ROAD, OXFORD, OX2 7ES

A light and spacious family house set in a desirable side road in the heart of Summertown.

- 5 Bedrooms
- 2 Reception Rooms
- 3 Bathrooms
- Garden
- Parking
- Unfurnished

## THE PROPERTY

The property benefits from hard flooring throughout the ground floor, a good size enclosed rear garden and driveway parking for two cars.

Accommodation comprising: Entrance hall, sitting room, family room/dining room, good size open plan kitchen/breakfast room with bi fold doors leading to garden. Utility room and cloakroom wc. 1st Floor: Principle bedroom with en suite, family bathroom, two further bedrooms. 2nd Floor: two bedrooms and bathroom. Available mid October on an Unfurnished basis.

EPC Rating: C

Council Tax Band : G - Oxford City Council

Mains gas, electricity and water are connected to the property.

Internet & Mobile: Further information on availability and speeds can be found at [checker.ofcom.org.uk](http://checker.ofcom.org.uk)

The property is Freehold.

Flood zone 1: Low risk

Holding deposit = 1 weeks rent of £692.00

Deposit is 5 weeks rent £3461



---

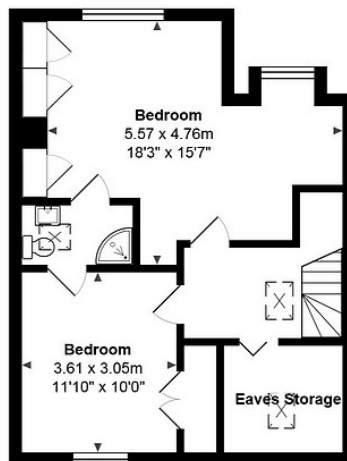
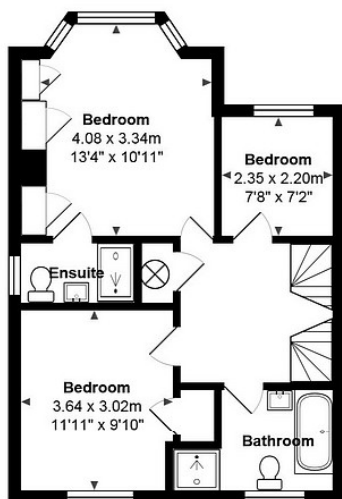
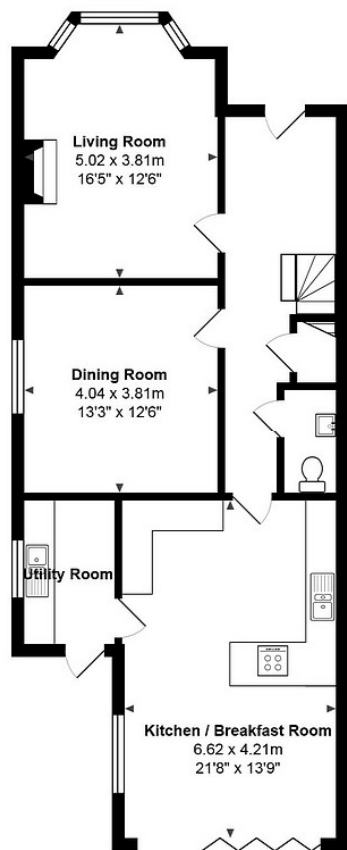
## ADDITIONAL INFORMATION

Offers	Available for a minimum term of 12 months longer terms will be considered
Viewing	Strictly by appointment
Local Authority	Oxford City Council - Council Tax Band G

---







Total Area: 186.0 m<sup>2</sup> ... 2003 ft<sup>2</sup>



Every care has been taken in producing this floor plan but no responsibility is taken for any error, omission or mis-statement.  
homeworks@dsl.pipex.com



#### IMPORTANT INFORMATION

These particulars are for general information purposes only and do not represent an offer or contract or part of one. Carter Jonas or anyone in their employment has made every attempt to ensure that the particulars and other information provided are as accurate as possible and they are not intended to amount to advice on which you should rely as being factually accurate. Full information which may be relevant to your decision regarding the property can be found on the property listing on [carterjonas.co.uk](http://carterjonas.co.uk) or a separately available material information sheet, and we would advise you to confirm the details of any material information prior to any offer being submitted. You should not assume that the property has all necessary planning, building regulations or other consents and Carter Jonas has not tested any services, facilities, or equipment. Any measurements and distances given are approximate only. Where Carter Jonas has been provided with a floorplan by a third party, we cannot guarantee that the floorplan has been measured in accordance with IPMS. Purchasers or prospective tenants must satisfy themselves of all of the aforementioned by independent inspection or otherwise. Our images only represent part of the property as it appeared at the time they were taken and do not represent the furnishings included; these are confirmed in a separate inventory. If you require further information, please contact us. \*Administration fees may apply depending on tenancy type. Please contact your local branch for this information.

T: 01865 511444

Mayfield House, 256 Banbury Road, Oxford, Oxfordshire, OX2 7DE  
E: [oxfordresilettings@carterjonas.co.uk](mailto:oxfordresilettings@carterjonas.co.uk)



Exclusive UK affiliate of  
**CHRISTIE'S**  
INTERNATIONAL REAL ESTATE