



**STABLEFORD, NEWCASTLE-UNDER-LYME, ST5**  
£1,550 per month\*

**Carter Jonas**



---

# STABLEFORD, NEWCASTLE- UNDER-LYME, STAFFORDSHIRE, ST5 5JH

A 4 bedroom semi-detached house with garage.

- 4 Bedrooms
- 2 En suite Shower Rooms
- 1 Family Bathroom
- Sitting Room
- Kitchen
- Downstairs Cloakroom
- Front Garden and Rear Patio Area
- Single Garage

## THE PROPERTY

Accommodation comprises - Ground Floor: Entrance porch, large entrance hall, sitting room, kitchen and downstairs cloakroom. First Floor: 4 Bedrooms, 2 with en suite shower rooms, and a family bathroom.

Externally there is a lawned front garden, paved rear garden and a single garage.

No access to Loft. No white goods. LPG gas, electricity and water. Septic tank which is shared with the whole of Stableford Court. High Flood Risk from surface water.

Internet & Mobile: Further information on availability and speeds can be found at [checker.ofcom.org.uk](https://checker.ofcom.org.uk)

Available unfurnished from the beginning of February 2025 for an initial 12 month term.

EPC Rating D. Council Tax Band F (please see Newcastle-under-Lyme Borough Council Website for current cost)

At a rent of £1,550 per calendar month

Holding deposit of 1 week's rent £357

Security deposit of 5 weeks rent £1,788



---

## ADDITIONAL INFORMATION

Offers	Available for a minimum term of 12 months longer terms will be considered
--------	---

Viewing	Strictly by appointment
---------	-------------------------

Local Authority	- Council Tax Band F
-----------------	----------------------

---

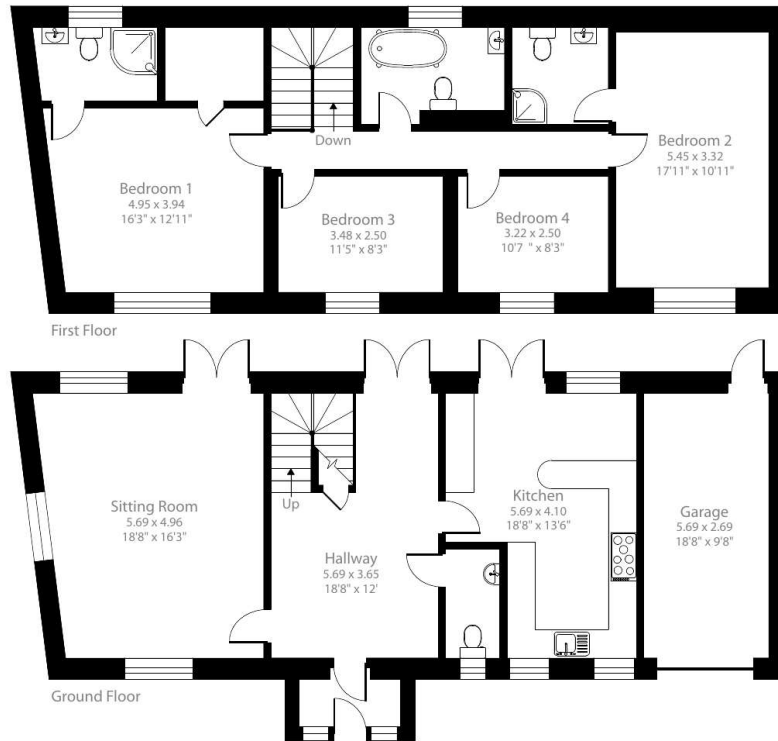




# Stableford Court, Stableford, Newcastle, ST5

Approximate Area = 1924 sq ft / 178.7 sq m

For identification only - Not to scale



Floor plan produced in accordance with RICS Property Measurement 2nd Edition, Incorporating International Property Measurement Standards (IPMS2 Residential). © nichecom 2025. Produced for Carter Jonas. REF: 1228485



## IMPORTANT INFORMATION

These particulars are for general information purposes only and do not represent an offer or contract or part of one. Carter Jonas or anyone in their employment has made every attempt to ensure that the particulars and other information provided are as accurate as possible and they are not intended to amount to advice on which you should rely as being factually accurate. Full information which may be relevant to your decision regarding the property can be found on the property listing on [carterjonas.co.uk](http://carterjonas.co.uk) or a separately available material information sheet, and we would advise you to confirm the details of any material information prior to any offer being submitted. You should not assume that the property has all necessary planning, building regulations or other consents and Carter Jonas has not tested any services, facilities, or equipment. Any measurements and distances given are approximate only. Where Carter Jonas has been provided with a floorplan by a third party, we cannot guarantee that the floorplan has been measured in accordance with IPMS. Purchasers or prospective tenants must satisfy themselves of all of the aforementioned by independent inspection or otherwise. Our images only represent part of the property as it appeared at the time they were taken and do not represent the furnishings included; these are confirmed in a separate inventory. If you require further information, please contact us. \*Administration fees may apply depending on tenancy type. Please contact your local branch for this information.

**T: 01865 511444**

Mayfield House, 256 Banbury Road, Oxford, Oxfordshire, OX2 7DE

E: [oxfordresilettings@carterjonas.co.uk](mailto:oxfordresilettings@carterjonas.co.uk)

A member of



*Exclusive UK affiliate of*

**CHRISTIE'S**  
INTERNATIONAL REAL ESTATE

Classification L2 - Business Data