



**VICARAGE ROAD, STONELEIGH, CV8**  
£1,400 per month\*

**Carter Jonas**



---

# VICARAGE ROAD, STONELEIGH, COVENTRY, WARWICKSHIRE, CV8 3DH

A semi-detached two-bedroom cottage situated within the Village of Stoneleigh.

- Sitting Room
- Kitchen
- Two Bedrooms
- Bathroom
- Garden
- Driveway
- Unfurnished

## THE PROPERTY

Accommodation comprising ground floor living room and kitchen. To the first floor are two bedrooms and separate family bathroom.

Externally: There is an enclosed rear garden, small summer house, off road parking and a timber garage.

Available unfurnished for an initial 12 month term early July 2025.

EPC Rating E . Council Tax Band D (please see Warwick Council Website for current cost)

Pets considered. No access to Loft. Mains electricity, water and drainage are connected to the property. Oil Central Heating.

Internet & Mobile: Further information on availability and speeds can be found at [checker.ofcom.org.uk](https://checker.ofcom.org.uk)

Flood Risk:- Very low

At a rent of £1,400 per calendar month

Holding deposit of 1 week's rent £323

Security deposit of 5 weeks rent £1615



---

## ADDITIONAL INFORMATION

Offers	Available for a term of 12 months initially
Viewing	Strictly by appointment
Local Authority	Council Tax Band D

---





**Approximate Gross Internal Area 850 sq ft - 78 sq m**

Ground Floor Area 425 sq ft – 39 sq m

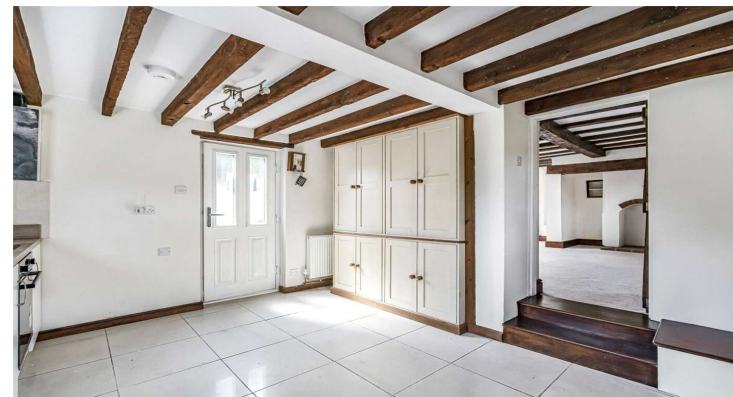
First Floor Area 425 sq ft – 39 sq m



Ground Floor



First Floor



#### IMPORTANT INFORMATION

These particulars are for general information purposes only and do not represent an offer or contract or part of one. Carter Jonas or anyone in their employment has made every attempt to ensure that the particulars and other information provided are as accurate as possible and they are not intended to amount to advice on which you should rely as being factually accurate. Full information which may be relevant to your decision regarding the property can be found on the property listing on [carterjonas.co.uk](http://carterjonas.co.uk) or a separately available material information sheet, and we would advise you to confirm the details of any material information prior to any offer being submitted. You should not assume that the property has all necessary planning, building regulations or other consents and Carter Jonas has not tested any services, facilities, or equipment. Any measurements and distances given are approximate only. Where Carter Jonas has been provided with a floorplan by a third party, we cannot guarantee that the floorplan has been measured in accordance with IPMS. Purchasers or prospective tenants must satisfy themselves of all of the aforementioned by independent inspection or otherwise. Our images only represent part of the property as it appeared at the time they were taken and do not represent the furnishings included; these are confirmed in a separate inventory. If you require further information, please contact us. \*Administration fees may apply depending on tenancy type. Please contact your local branch for this information.

**T: 01865 511444**

Mayfield House, 256 Banbury Road, Oxford, Oxfordshire, OX2 7DE

E: [oxfordresilettings@carterjonas.co.uk](mailto:oxfordresilettings@carterjonas.co.uk)

A member of



*Exclusive UK affiliate of*

**CHRISTIE'S**  
INTERNATIONAL REAL ESTATE