



**BLenheim MEWS, 409A BANBURY ROAD, OX2**  
£1,800 per month\*

**Carter Jonas**

---

## **BLenheim MEWS, 409A BANBURY ROAD, OXFORD, OX2 7RF**

- 1 BEDROOM HOUSE
- Reception Room
- Kitchen
- Bathroom
- Balcony
- Parking
- Unfurnished

### **THE PROPERTY**

The property offers modern and versatile living accommodation with high ceilings and wooden floors throughout the ground floor.

Comprising: Spacious entrance hall, cloakroom wc, open plan living area/kitchen with double doors leading onto patio area, good size landing which could provide a useful study space, large bedroom with en suite, built in wardrobe and balcony. Gas fired underfloor heating and allocated off street parking for 1 car. House alarm and security gate.

Mians gas, electric and mains drainage.

Available early August for an initial 12 month tenancy. Unfurnished.

EPC: C

Council Tax Band: D (Oxford City Council)

Flood Risk: Very Low

Internet & Mobile: Further information on availability and speeds can be found on the Ofcom website.

Holding deposit = 1 weeks rent of £415

Deposit is 5 weeks rent (£1800 pcm = £2076 deposit)

**\*\*Possibility of mid-July start. \*\*ONE BEDROOM HOUSE\*\***  
A large and striking contemporary one bedroom house with a total of 762 square feet of space. Conveniently located for Summertown, Oxford Parkway and the Oxford ring road.





---

## ADDITIONAL INFORMATION

---

Offers	Available for a minimum term of 12 months longer terms will be considered
--------	---

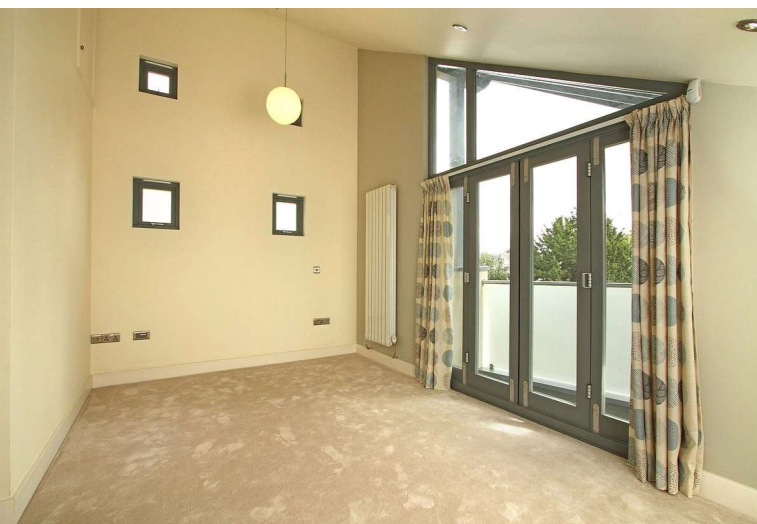
---

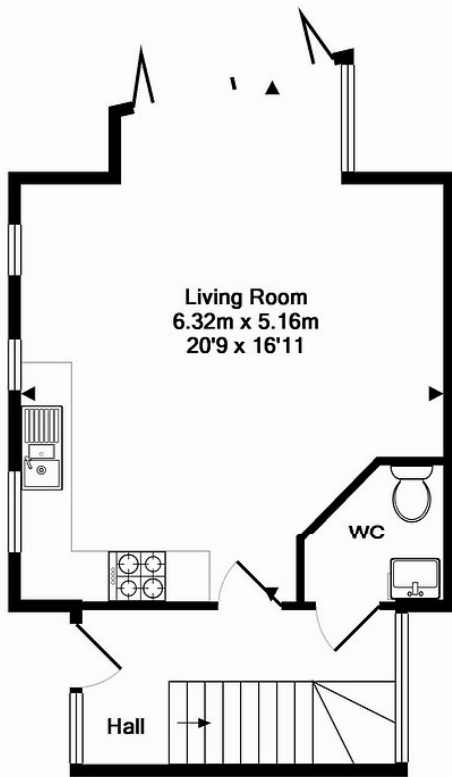
Viewing	Strictly by appointment
---------	-------------------------

---

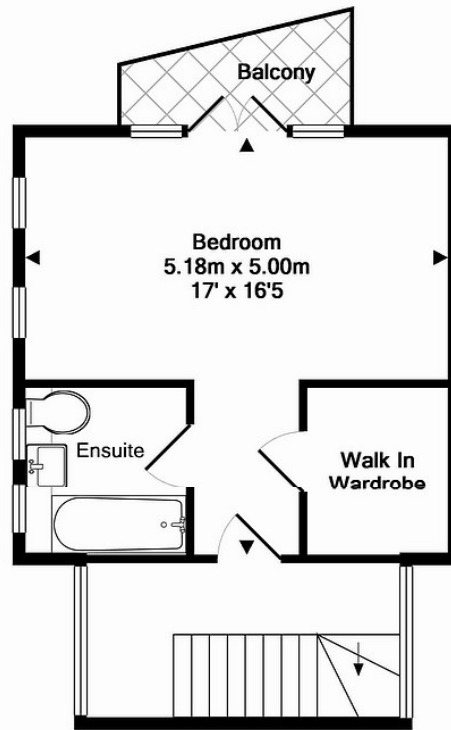
Local Authority	Oxford City Council - Council Tax Band D
-----------------	--

---





GROUND FLOOR  
APPROX. FLOOR  
AREA 36.9 SQ.M.  
(398 SQ.FT.)



1ST FLOOR  
APPROX. FLOOR  
AREA 33.8 SQ.M.  
(364 SQ.FT.)

TOTAL APPROX. FLOOR AREA 70.8 SQ.M. (762 SQ.FT.)

Whilst every attempt has been made to ensure the accuracy of this floor plan, measurements are approximate and no responsibility is taken for any error, omission or mis-statement. This floor plan is for illustrative purposes only.  
Made with Metropix ©2014



**T: 01865 511444**

Mayfield House, 256 Banbury Road, Oxford, Oxfordshire, OX2 7DE  
E: [oxfordresilettings@carterjonas.co.uk](mailto:oxfordresilettings@carterjonas.co.uk)

A member of



*Exclusive UK affiliate of*

**CHRISTIE'S**  
INTERNATIONAL REAL ESTATE

Classification L2 - Business Data

#### IMPORTANT INFORMATION

These particulars are for general information purposes only and do not represent an offer or contract or part of one. Carter Jonas or anyone in their employment has made every attempt to ensure that the particulars and other information provided are as accurate as possible and they are not intended to amount to advice on which you should rely as being factually accurate. Full information which may be relevant to your decision regarding the property can be found on the property listing on [carterjonas.co.uk](http://carterjonas.co.uk) or a separately available material information sheet, and we would advise you to confirm the details of any material information prior to any offer being submitted. You should not assume that the property has all necessary planning, building regulations or other consents and Carter Jonas has not tested any services, facilities, or equipment. Any measurements and distances given are approximate only. Where Carter Jonas has been provided with a floorplan by a third party, we cannot guarantee that the floorplan has been measured in accordance with IPMS. Purchasers or prospective tenants must satisfy themselves of all of the aforementioned by independent inspection or otherwise. Our images only represent part of the property as it appeared at the time they were taken and do not represent the furnishings included; these are confirmed in a separate inventory. If you require further information, please contact us. \*Administration fees may apply depending on tenancy type. Please contact your local branch for this information.