



BANBURY ROAD, OXFORD, OX2
£3,000 per month*

Carter Jonas

MURRAY COURT, BANBURY ROAD, OXFORD, OXFORDSHIRE, OX2 6LQ

- 3 bedrooms
- large reception room
- kitchen/breakfast room
- 2 bathrooms
- top floor apartment
- garage
- long term tenancy
- professionally managed

THE PROPERTY

Situated on the top floor with access via the stairwell or lift this property has been newly decorated and new carpets have been fitted throughout.

Accommodation consists: entrance hall, large living/dining room, kitchen/breakfast room with new appliances, main bedroom and ensuite bathroom with shower over the bath, two further double bedrooms and main family bathroom with shower over bath. The property benefits from fitted wardrobes to all the bedrooms and large south facing windows throughout.

The property also has a garage which has the ability to have an electric car charger fitted subject to permission from the block managers. The communal block has a mature garden for the use of the residents.

Available unfurnished for an initial 12 month term, available from the 8th April.

EPC Rating (C). Council Tax Band (F) (please see Oxford City Council Website for current cost)

No access to Loft. Mains gas, electricity, water and drainage.

Internet & Mobile: Further information on availability and speeds can be found at checker.ofcom.org.uk

A newly decorated top floor apartment offering light and spacious accommodation in this desirable apartment block.



Flood Zone (1) – Low

At a rent of £3,000 per calendar month

Holding deposit of 1 week's rent £692

Security deposit of 5 weeks rent £3461

ADDITIONAL INFORMATION

Offers Available for a minimum term of 12 months longer terms will be considered

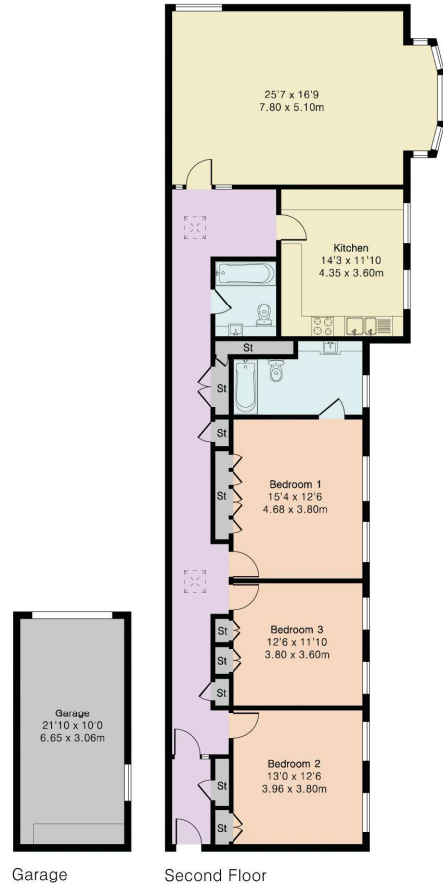
Viewing Strictly by appointment

Local Authority Oxford City Council - Council Tax Band F



Approximate Gross Internal Area 1633 sq ft - 152 sq m
(Excluding Garage)

Garage Area 219 sq ft - 20 sq m



Floor plan produced in accordance with RICS Property Measurement 2nd Edition. Although Pink Plan Ltd ensures the highest level of accuracy, measurements of doors, windows and rooms are approximate and no responsibility is taken for error, omission or misstatement. These plans are for representation purposes only and no guarantee is given on the total square footage of the property within this plan. The figure icon is for initial guidance only and should not be relied on as a basis of valuation.

T: 01865 511444

Mayfield House, 256 Banbury Road, Oxford, Oxfordshire, OX2 7DE

E: oxford.lettings@carterjonas.co.uk

A member of



Carter Jonas

Exclusive UK affiliate of

CHRISTIE'S
INTERNATIONAL REAL ESTATE

Classification L2 - Business Data



IMPORTANT INFORMATION

These particulars are for general information purposes only and do not represent an offer or contract or part of one. Carter Jonas or anyone in their employment has made every attempt to ensure that the particulars and other information provided are as accurate as possible and they are not intended to amount to advice on which you should rely as being factually accurate. Full information which may be relevant to your decision regarding the property can be found on the property listing on carterjonas.co.uk or a separately available material information sheet, and we would advise you to confirm the details of any material information prior to any offer being submitted. You should not assume that the property has all necessary planning, building regulations or other consents and Carter Jonas has not tested any services, facilities, or equipment. Any measurements and distances given are approximate only. Where Carter Jonas has been provided with a floorplan by a third party, we cannot guarantee that the floorplan has been measured in accordance with IPMS. Purchasers or prospective tenants must satisfy themselves of all of the aforementioned by independent inspection or otherwise. Our images only represent part of the property as it appeared at the time they were taken and do not represent the furnishings included; these are confirmed in a separate inventory. If you require further information, please contact us. *Administration fees may apply depending on tenancy type. Please contact your local branch for this information.