



HARTLEY COURT, WOODSTOCK ROAD, OX2

£2,950 per month*

Carter Jonas

HARTLEY COURT, WOODSTOCK ROAD, OXFORD, OX2 7PF

- Recently refurbished apartment
- Sought after location
- Double length garage
- Farrow & Ball paints and Amtico flooring
- Fitted kitchen with Franke fittings
- Bathroom with Fired Earth Tiles/Grohe fittings

THE PROPERTY

This light and spacious two-bedroom apartment is part of a development in a highly sought-after area of Central North Oxford close to the city centre. The apartment boasts large windows bringing natural light into the property.

The apartment has been recently refurbished throughout to a high standard and painted with Farrow & Ball paints and benefits from Amtico hard flooring throughout.

There is a large (31'8 x 14'9) double aspect sitting room with a lovely bay window. The refurbished kitchen has stone worktops and the following integrated Bosch appliances: Fridge/freezer, full size dishwasher, double oven and hob. There are two good sized bedrooms, with built in storage. A luxury bathroom with Grohe fittings and Fired Earth Tiles. The hallway cupboard provides useful storage and also an AEG washer/dryer. There is a separate cloakroom as you enter with WC and storage for shoes/coats. Outside there is a double length garage and also parking for an additional car in front of the garage.

The property is located in the sought-after North Oxford Victorian Conservation area, flanked by Port meadow to the west and the University Parks to the east. Summertown is close by with its excellent range of local shops, pubs and restaurants and close to the city centre, with its abundance of history, culture and first-class shopping and leisure facilities. Charming North Parade and the restaurants of Walton Street are also close by. Within walking distance of the Dragon School and easy reach of North Oxford's excellent choice of schools. Central London is less than an hour

Recently refurbished, spacious, 2nd floor apartment (with lift) in most sought after Central North Oxford location. Amtico hard flooring.



away by train, either from the station in the city centre or Oxford Parkway (just north of the city) to both Paddington and Marylebone. There is also an efficient 24-hour coach service to and from the capital.

Available early June for an initial 12 month tenancy. Unfurnished. Council tax band F. EPC level C.

Flood risk Rivers and Seas: Very Low

Mains gas, electricity, water and drainage.

Internet & Mobile: Further information on availability and speeds can be found at checker.ofcom.org.uk

Holding deposit = 1 weeks rent @ £2,950 pcm = £680

Deposit = 5 weeks rent @ £2950 pcm = £3403

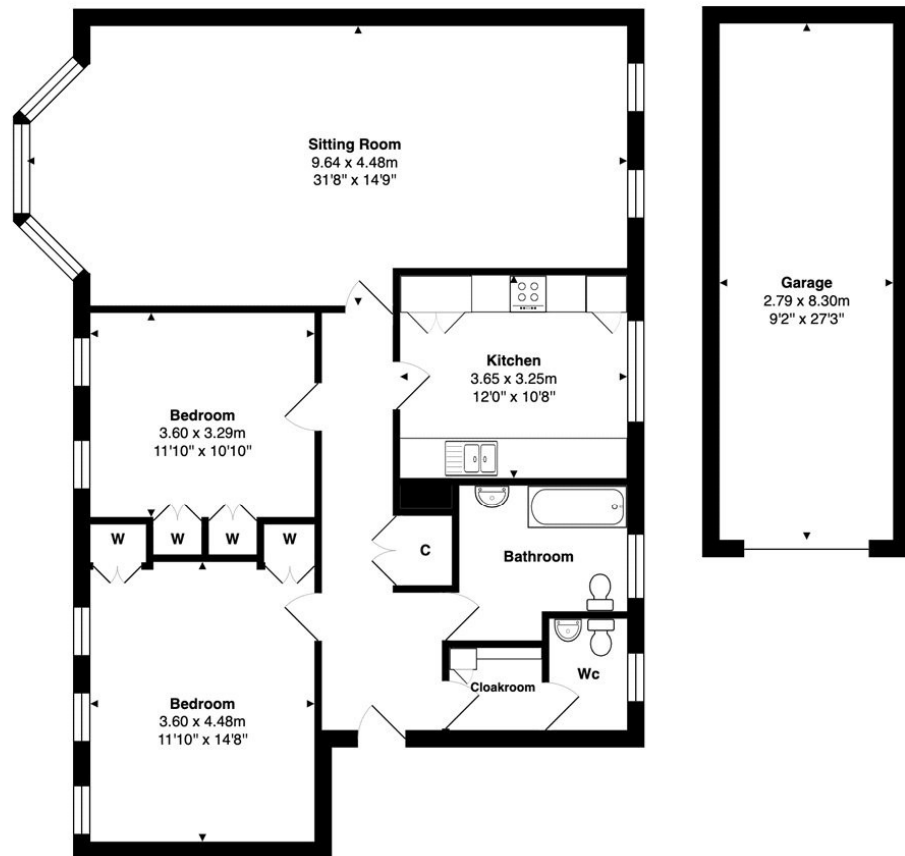
ADDITIONAL INFORMATION

Offers Available for a minimum term of 12 months longer terms will be considered

Viewing Strictly by appointment

Local Council Tax Band F
Authority





Approx. Gross Internal Area: 106.2 m² ... 1143 ft² (excluding garage)

Whilst every attempt has been made to ensure the accuracy of the floor plan contained here, measurements of doors, windows, rooms, and any other items are approximate. No responsibility is taken for any error, omission, or mis-statement. This plan is for illustrative purposes only and should be used as such.
 Drawn by E8 Property Services. www.e8ps.co.uk



IMPORTANT INFORMATION

These particulars are for general information purposes only and do not represent an offer or contract or part of one. Carter Jonas or anyone in their employment has made every attempt to ensure that the particulars and other information provided are as accurate as possible and they are not intended to amount to advice on which you should rely as being factually accurate. Full information which may be relevant to your decision regarding the property can be found on the property listing on carterjonas.co.uk or a separately available material information sheet, and we would advise you to confirm the details of any material information prior to any offer being submitted. You should not assume that the property has all necessary planning, building regulations or other consents and Carter Jonas has not tested any services, facilities, or equipment. Any measurements and distances given are approximate only. Where Carter Jonas has been provided with a floorplan by a third party, we cannot guarantee that the floorplan has been measured in accordance with IPMS. Purchasers or prospective tenants must satisfy themselves of all of the aforementioned by independent inspection or otherwise. Our images only represent part of the property as it appeared at the time they were taken and do not represent the furnishings included; these are confirmed in a separate inventory. If you require further information, please contact us. *Administration fees may apply depending on tenancy type. Please contact your local branch for this information.

T: 01865 511444

Mayfield House, 256 Banbury Road, Oxford, Oxfordshire, OX2 7DE

E: oxford.lettings@carterjonas.co.uk

A member of



Exclusive UK affiliate of

CHRISTIE'S
INTERNATIONAL REAL ESTATE