



GOWAN AVENUE, SW6

An immaculately presented, period, ground floor flat which features two double bedrooms, both with high ceilings, a modern bathroom and separate shower room. The property boasts a spacious open plan kitchen/dining/reception room with French doors opening onto the beautiful patio garden.

Gowan Avenue is an extremely popular residential street running between Fulham Palace Road and the Munster Road and is conveniently located for the shops and restaurants in Munster Village and on the Fulham Road. Parsons Green and Putney Bridge tube stations (District Line) are within walking distance.

- Open Plan Kitchen/Dining/Reception Room
- Two Double Bedrooms
- Bathroom
- Shower Room
- Patio Garden
- EPC Rating C

£885,000

Subject to contract

Leasehold

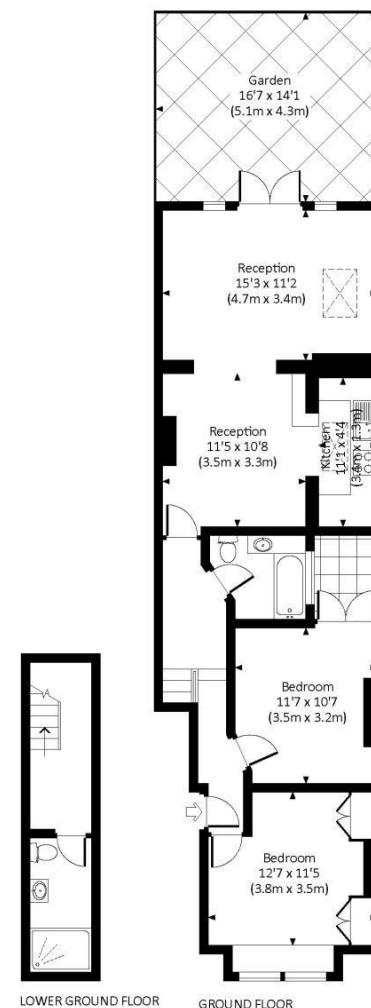
361 Fulham Palace Road London SW6 6TA
fulhamsales@sullivanthomas.co.uk

783 Fulham Road London SW6 5HD
fulhamsales@sullivanthomas.co.uk

020 7731 3333

020 7751 8899

GOWAN AVENUE, SW6
Approx. gross internal area
901 Sq Ft. / 83.7 Sq M.



LOWER GROUND FLOOR

GROUND FLOOR

All measurements have been made in accordance with NICE Code of Measuring Practice which are approximate only and only for illustrative purposes. For the avoidance of doubt, Dowling Jones Design shall not be liable for any reliance on these measurements. © 2015 www.dowlingjones.com 020 7610 9933

S723 Printed by Ravensworth 01670 713330