



HARBORD STREET, LONDON, SW6
£750,000

Carter Jonas

HARBORD STREET, LONDON, SW6

A charming ground floor garden flat featuring two double bedrooms, a dining room, bathroom, semi open plan kitchen/reception room with sliding doors opening on to the fabulous wider than average garden with useful side access. Scope exists to extend subject to the usual permissions.

Harbord Street is a popular residential street in the Bishops Park conservation area with Bishops Park and leafy riverside walks at the end of the road. Putney Bridge and Hammersmith tube stations are in walking distance as are local shops and restaurants.

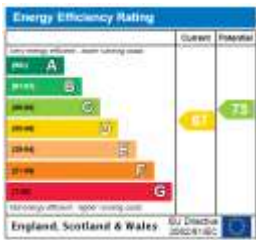
AMENITIES

- 2 Bedrooms
- Dining room
- Kitchen/reception room
- Garden
- Bathroom

TENURE Leasehold, 189 years from 25 December 1981

LOCAL AUTHORITY Hammersmith & Fulham

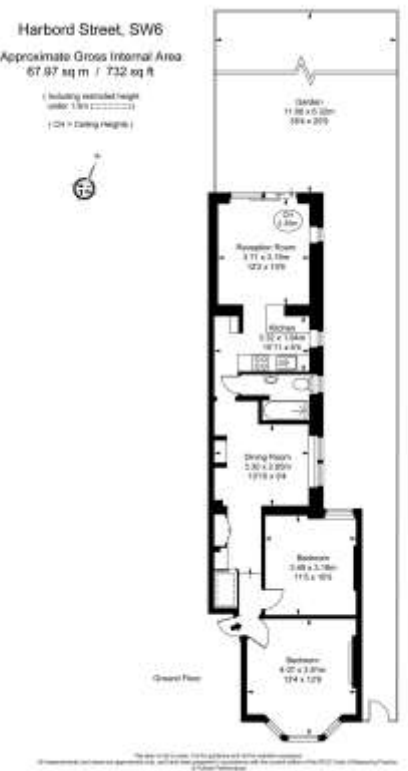
EPC BAND D



Fulham 020 7731 3333

bishopspark@carterjonas.co.uk

361 Fulham Palace Road, London, SW6 6TA



carterjonas.co.uk

Offices throughout the UK

IMPORTANT INFORMATION

These particulars are for general information purposes only and do not represent an offer of contract or part of one. Carter Jonas has made every attempt to ensure that the particulars and other information provided are as accurate as possible and are not intended to amount to advice on which you should rely as being factually accurate. You should not assume that the property has all necessary planning, building regulations or other consents and Carter Jonas have not tested any services, facilities or equipment. Any measurements and distances given are approximate only. Purchasers must satisfy themselves of all of the aforementioned by independent inspection or otherwise. Although we make reasonable efforts to update our information, neither Carter Jonas LLP nor anyone in its employment or acting on its behalf makes any representations warranties or guarantees, whether express or implied, in relation to the property, or that the content in these particulars is accurate, complete or up to date. Our images only represent part of the property as it appeared at the time they were taken. If you require further information please contact us.