



KING STREET, LONDON, W6
£1,950 per month*

Carter Jonas

KING STREET, LONDON, W6

A brand new one bedroom apartment finished to a high standard and conveniently situated on King Street, Hammersmith.

- Brand new development of four flats
- High finish throughout
- One double bedroom with fitted wardrobes
- Terrace and small balcony access
- Fitted open plan kitchen with Siemens appliances
- Bike store
- Extremely convenient location
- EPC rating C

LOCATION

King Street runs parallel to the River Thames and provides an abundance of shopping and eating options. This newly built development is positioned close to Hammersmith Broadway (District, Picadilly, Hammersmith & Circle) and Ravenscourt Park (District) underground stations along with a wide range of bars, shops and restaurants.

THE PROPERTY

This brand new apartment is situated on the first floor of a new development and is ultra-convenient for an abundance of amenities.

This stunning property is set over two floors and comprises of an open plan kitchen with fitted siemens appliances and reception room whilst the second floor provides a double bedroom with en suite bathroom and direct access to a terrace.

There is a further balcony off the reception room and separate W/C.

Holding deposit is 1 weeks rent of £450
Deposit is 5 weeks rent (£450pw=£2,250 deposit)

OUTSIDE

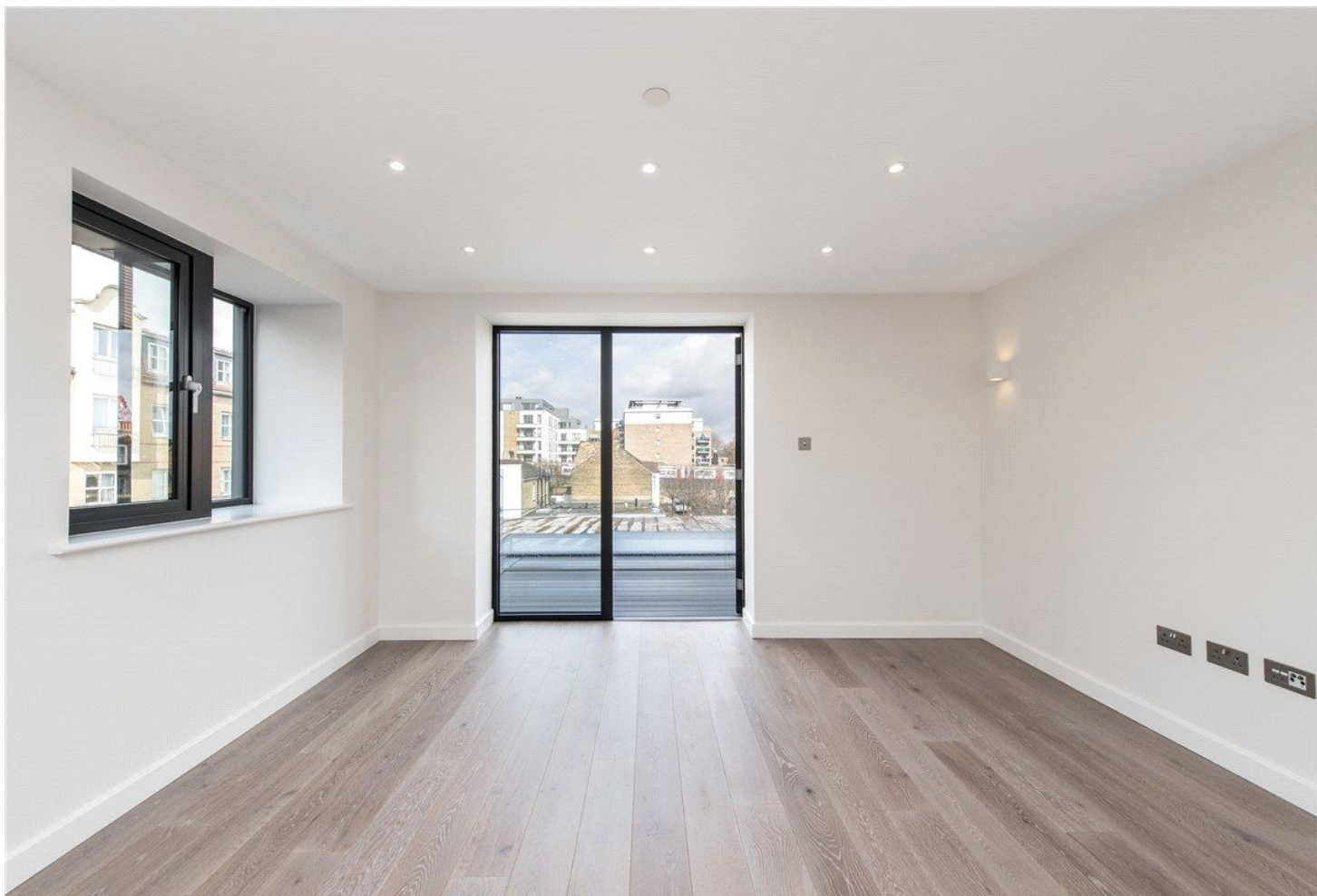
Terrace and small balcony



ADDITIONAL INFORMATION

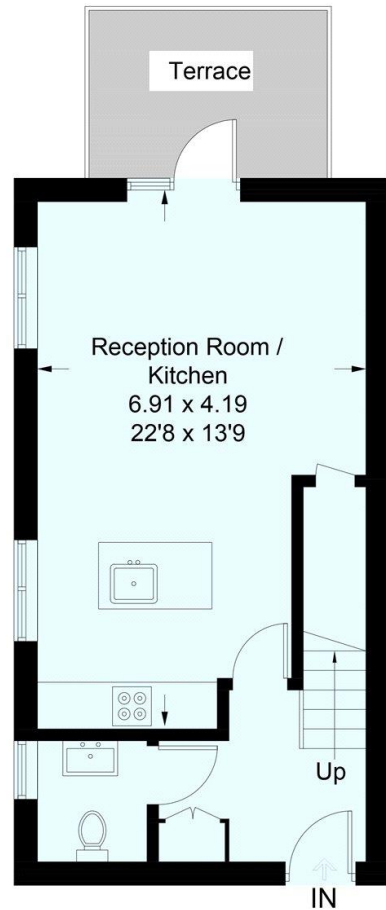
Offers	Available for a minimum term of 12 months longer terms will be considered
--------	---

Viewing	Strictly by appointment
---------	-------------------------

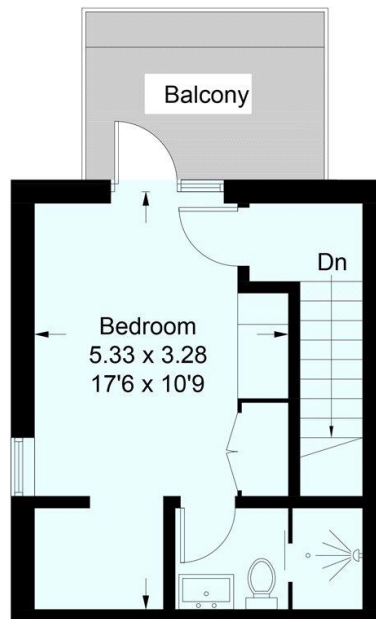


King Street, W6

Approximate Gross Internal Area
57.8 sq m / 622 sq ft



Second Floor - Flat 4
35.8 sq m / 385 sq ft



Third Floor - Flat 4
22 sq m / 237 sq ft

This plan is for layout guidance only. Not drawn to scale unless stated. Windows and door openings are approximate. Whilst every care is taken in the preparation of this plan, please check all dimensions, shapes and compass bearings before making any decisions reliant upon them. (ID418485)

T: 020 7751 8898

783 Fulham Road, London, SW6 5HD

E: parsonsgreen.residential.lettings@carterjonas.co.uk

carterjonas.co.uk
Offices throughout the UK

A member of
onTheMarket.com
Classification L2 - Business Data



IMPORTANT INFORMATION

Our property particulars do not represent an offer or contract, or part of one. The information given is without responsibility on the part of the agents, seller(s) or lessor(s) and you should not rely on the information as being factually accurate about the property, its condition or its value. Neither Carter Jonas LLP nor anyone in its employment or acting on its behalf has authority to make any representation or warranty in relation to this property. We have not carried out a detailed survey, nor tested the services, appliances or fittings at the property. The images shown may only represent part of the property and are as they appeared at the time of being photographed. The areas, measurements and distances are approximate only. Any reference to alterations or use does not mean that any necessary planning permission, building regulation or other consent has been obtained. The VAT position relating to the property may change without notice.