



WESTCROFT SQUARE, LONDON, W6
£4,000 per month*

Carter Jonas

WESTCROFT SQUARE, LONDON, W6 0TA

4 sharers can apply! A spacious four double bedroom first and second floor apartment. EPC rating D

- Four double bedrooms
- Spacious reception room
- High ceilings
- EPC rating D
- Unfurnished

THE PROPERTY

A bright and spacious four double bedroom split level apartment in a sought-after location of Hammersmith.

The first floor comprises a bright reception room, a large kitchen with excellent built in storage and a spacious double bedroom.

The second floor comprises three double bedrooms, a large bathroom and separate WC.

4 professional sharers can apply.

Holding deposit: 1 weeks rent

Security deposit: 5 weeks rent

Council tax band - F

Minimum term: 12 months

Parking: On street via a permit

LOCATION

The property is ideally situated on the borders of Hammersmith and Chiswick, close to fantastic shops, bars and restaurants as well as both Stamford Brook and Ravenscourt Park underground station (District Line), all within a short walking distance. Westcrot Square is a beautiful garden square which can be accessed for free by the residents.



ADDITIONAL INFORMATION

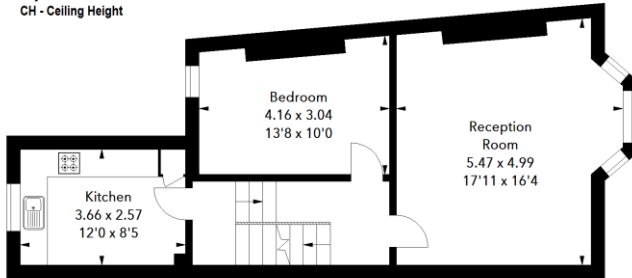
Offers	Available for a minimum term of 12 months longer terms will be considered
Viewing	Strictly by appointment
Local Authority	Hammersmith and Fulham – Council tax band F



Westcroft Square, W6

Approximate Area = 111.76 sq m / 1203 sq ft

Key :
CH - Ceiling Height



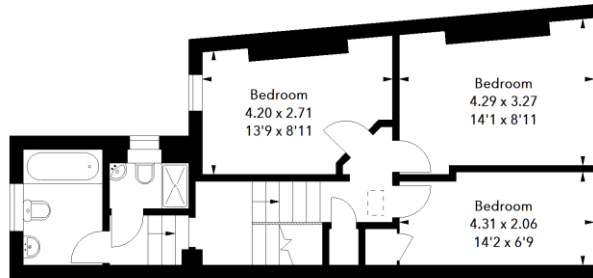
First Floor

Approx. 55.37 sq m / 596 sq ft



Ground Floor
Entrance

Approx. 2.42 sq m / 26 sq ft



Second Floor

Approx. 53.97 sq m / 581 sq ft

The floor plan is not to scale and measurements and areas shown are approximate and therefore should be used for illustrative purposes only. The plan has been prepared in accordance with the RICS code of Measuring Practice and whilst we have confidence in the information produced, it must not be relied on. If there is any aspect of particular importance, you should carry out or commission your own inspection of the property.

Energy Efficiency Rating		Current	Potential
Very energy efficient - lower running costs			
(92-100)	A		
(81-91)	B		
(69-80)	C		
(55-68)	D		
(48-54)	E		
(35-47)	F		
(21-34)	G		
Not energy efficient - higher running costs			
		62	80
England, Scotland & Wales		EU Directive 2002/91/EC	



T: 020 7751 8898

361 Fulham Palace Road, London, SW6 6TA

E: parsonsgreen.residential.lettings@carterjonas.co.uk



Exclusive UK affiliate of

CHRISTIE'S
INTERNATIONAL REAL ESTATE

Classification L2 - Business Data

IMPORTANT INFORMATION

These particulars are for general information purposes only and do not represent an offer or contract or part of one. Carter Jonas or anyone in their employment has made every attempt to ensure that the particulars and other information provided are as accurate as possible and they are not intended to amount to advice on which you should rely as being factually accurate. Full information which may be relevant to your decision regarding the property can be found on the property listing on carterjonas.co.uk or a separately available material information sheet, and we would advise you to confirm the details of any material information prior to any offer being submitted. You should not assume that the property has all necessary planning, building regulations or other consents and Carter Jonas has not tested any services, facilities, or equipment. Any measurements and distances given are approximate only. Where Carter Jonas has been provided with a floorplan by a third party, we cannot guarantee that the floorplan has been measured in accordance with IPMS. Purchasers or prospective tenants must satisfy themselves of all of the aforementioned by independent inspection or otherwise. Our images only represent part of the property as it appeared at the time they were taken and do not represent the furnishings included; these are confirmed in a separate inventory. If you require further information, please contact us. *Administration fees may apply depending on tenancy type. Please contact your local branch for this information.