



**RADIPOLE ROAD, LONDON, SW6**  
£4,500 per month\*

**Carter Jonas**

# FLAT 3, RADIPOLE ROAD, LONDON, SW6 5DL

- Three bedrooms
- Three bathrooms
- Two roof terraces
- Split level
- Modern
- Excellent location
- Outside space

## LOCATION

Radipole Road runs off the Fulham Road and therefore benefits from the shopping and transport of the local area, including Parsons Green and Fulham Broadway. The open spaces of Eel Brook Common, Hurlingham Park and Bishops Park are all nearby.

## THE PROPERTY

This tastefully decorated three bedroom apartment is located in the heart of Parsons Green.

The apartments comprises three double bedrooms, three bathrooms (one en-suite) with a stunning reception and open plan fully fitted kitchen.

Holding deposit: 1 week's rent

Security deposit: 5 weeks' rent

Minimum term: 6 months

Council tax: Band E

Parking: on street via a permit

## OUTSIDE

Two roof terraces

A stunning three double bedroom split level apartment on the top floor with two roof terraces. EPC D



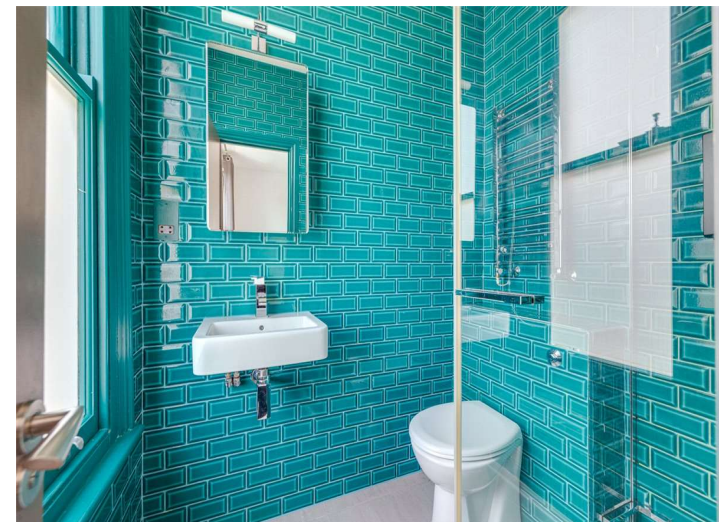


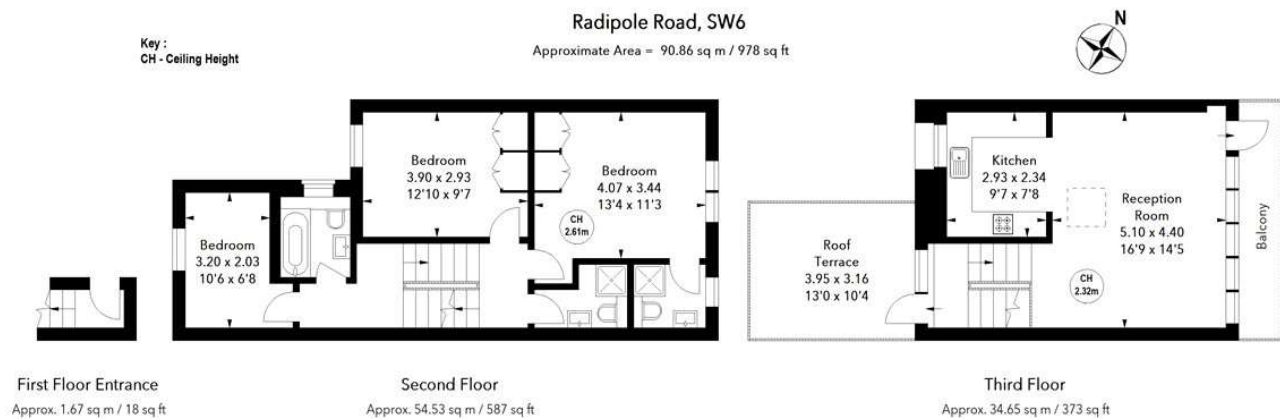
---

## ADDITIONAL INFORMATION

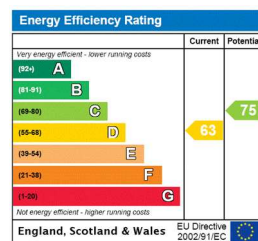
Offers	Available for a minimum term of 12 months longer terms will be considered
Viewing	Strictly by appointment
Local Authority	- Council Tax Band E

---





The floor plan is not to scale and measurements and areas shown are approximate and therefore should be used for illustrative purposes only. The plan has been prepared in accordance with the RICS code of Measuring Practice and whilst we have confidence in the information produced, it must not be relied on. If there is any aspect of particular importance, you should carry out or commission your own inspection of the property.



T: 020 7751 8898

361 Fulham Palace Road, London, SW6 6TA

E: parsonsgreen.residential.lettings@carterjonas.co.uk



Exclusive UK affiliate of

CHRISTIE'S  
INTERNATIONAL REAL ESTATE

Classification L2 - Business Data

#### IMPORTANT INFORMATION

These particulars are for general information purposes only and do not represent an offer or contract or part of one. Carter Jonas or anyone in their employment has made every attempt to ensure that the particulars and other information provided are as accurate as possible and they are not intended to amount to advice on which you should rely as being factually accurate. Full information which may be relevant to your decision regarding the property can be found on the property listing on [carterjonas.co.uk](http://carterjonas.co.uk) or a separately available material information sheet, and we would advise you to confirm the details of any material information prior to any offer being submitted. You should not assume that the property has all necessary planning, building regulations or other consents and Carter Jonas has not tested any services, facilities, or equipment. Any measurements and distances given are approximate only. Where Carter Jonas has been provided with a floorplan by a third party, we cannot guarantee that the floorplan has been measured in accordance with IPMS. Purchasers or prospective tenants must satisfy themselves of all of the aforementioned by independent inspection or otherwise. Our images only represent part of the property as it appeared at the time they were taken and do not represent the furnishings included; these are confirmed in a separate inventory. If you require further information, please contact us. \*Administration fees may apply depending on tenancy type. Please contact your local branch for this information.