



KENYON STREET, LONDON, SW6

£1,750,000

Carter Jonas

KENYON STREET, LONDON, SW6

This beautifully presented terraced period home offers generous accommodation and features on the ground floor a bay fronted reception room with plantation shutters and fireplace which leads to a well-equipped separate kitchen. At the rear is a good sized further reception/dining room with double doors leading to the south facing garden flooded with natural light. The first floor has a well-proportioned principal bedroom, two further double bedrooms and a family bathroom. On the upper floor are 2 more double bedrooms and a large shower room. Scope exists to extend the ground floor (subject to the usual planning permissions.)

Kenyon Street runs from Fulham Palace Road to Stevenage Road and is well located for the open spaces of Bishops Park and leafy walks along the Thames and the new Fulham Pier with restaurants, bar, members club and events. There are good local transport links nearby with Putney Bridge tube station (District line 1.1 mile) as are the numerous restaurants and shops nearby on Fulham Road.

AMENITIES

- 5 Double Bedrooms
- 2 Reception rooms
- Kitchen
- 2 Bathrooms
- Garden
- In excess of 1,700 sq. ft

TENURE Freehold

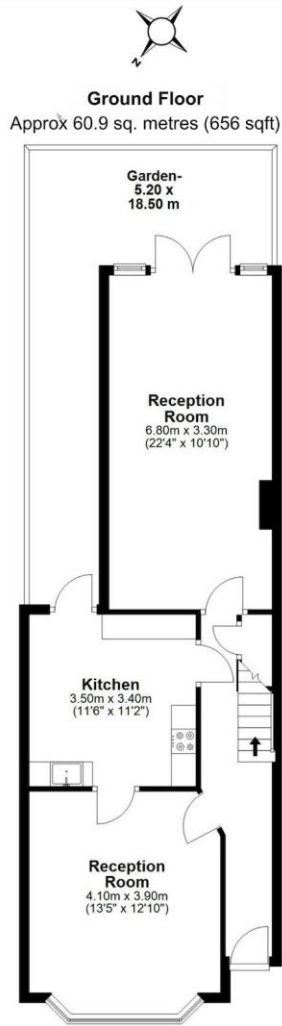
LOCAL AUTHORITY Hammersmith and Fulham

EPC BAND D

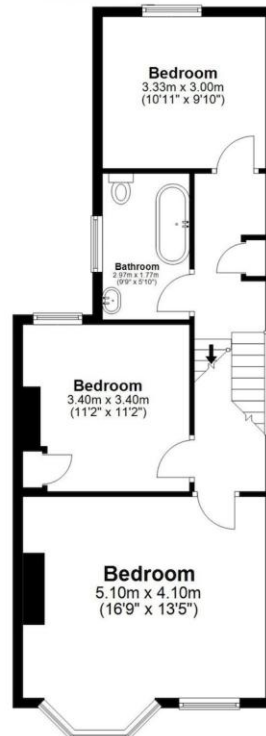
A CHARMING PERIOD TERRACED FAMILY HOUSE OFFERING IN EXCESS OF 1700 SQFT. SCOPE EXISTS TO EXTEND FURTHER (SUBJECT TO THE USUAL PERMISSIONS). EPC RATING D.







First Floor
Approx 58.9 sq. metres (635 sqft)



Main Area: Approx. 158.91 sq. metres (1710 sq. feet)
Plus Eaves: Approx 11.23 sq. metres (121 sq. feet)
Inclusive Total Area 170.14 sq. metres (1831 sq. feet)

Second Floor
Approx 39 sq. metres (420 sqft)

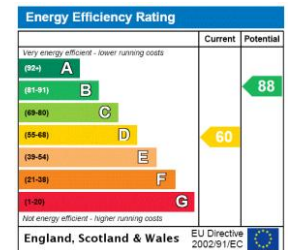


All measurements have been taken as a guide to prospective buyers only and are not precise. This plan is for illustrative purposes only and no responsibility for any error, omission or misstatement. The services, systems and appliances shown have not been tested and no guarantee as to their operability or efficiency can be given. Measurements may have been taken from the widest area and may include wardrobe/cupboard space. No guarantee is given to any measurements including total areas. Buyers are advised to take their own measurements.

Floor Plan Drawn According To RICS Guidelines

© @modephoto.uk | www.modephoto.co.uk
Plan produced using PlanUp. □

Kenyon St



Fulham 020 7731 3333

bishopspark@carterjonas.co.uk
361 Fulham Palace Road, London, SW6 6TA

carterjonas.co.uk
Offices throughout the UK

Exclusive UK affiliate of
CHRISTIE'S
INTERNATIONAL REAL ESTATE

IMPORTANT INFORMATION

These particulars are for general information purposes only and do not represent an offer or contract or part of one. Carter Jonas or anyone in their employment has made every attempt to ensure that the particulars and other information provided are as accurate as possible and they are not intended to amount to advice on which you should rely as being factually accurate. Full information which may be relevant to your decision regarding the property can be found on the property listing on carterjonas.co.uk or, (including off market properties) on the brochure or a separately available material information sheet. We would advise you to confirm the details of any material information prior to any offer being submitted. You should not assume that the property has all necessary planning, building regulations or other consents and Carter Jonas has not tested any services, facilities or equipment. Any measurements and distances given are approximate only. Where Carter Jonas has been provided with a floorplan by a third party, we cannot guarantee that the floorplan has been measured in accordance with IPMS. Purchasers must satisfy themselves of all of the aforementioned by independent inspection or otherwise. Our images only represent part of the property as it appeared at the time they were taken and do not represent the furnishings included; these are confirmed in a separate inventory. If you require further information, please contact us.