



NITON STREET, LONDON, SW6

£3,500 per month*

Carter Jonas

NITON STREET, LONDON, SW6

A stylish three bedroom maisonette with mezzanine style kitchen and access to south facing rear garden. EPC rating D.

- Three bedrooms
- Mezzanine kitchen
- Two bathrooms (one en suite)
- South facing garden
- Period features and excellent natural light
- Managed by Carter Jonas
- EPC rating D

LOCATION

Niton Street situated in the sought after 'Alphabet' streets of the Bishops Park Estate. Running towards the river off Fulham Palace Road, it is conveniently located to take advantage of Fulham's recently refurbished, tranquil Bishops Park and the local area's shops, restaurants and sports facilities (tennis courts and gym). The Thames path, Nuffield Health Club, Little Waitrose, The River Café and the Crabtree pub are within close proximity, along with the amenities on the Fulham Palace Road. Transport links of Hammersmith Broadway (Circle, Hammersmith & City, Piccadilly and District lines) and Putney Bridge (District line) in close walking proximity.

THE PROPERTY

This superb property is located on a popular tree lined road within Bishops Park and retains many period features throughout whilst enjoying excellent natural light.

The first floor comprises of master bedroom with en suite shower room, two further bedrooms, guest bathroom and large reception room. The top floor is an open plan mezzanine style kitchen, with fitted units and an area for dining table. The property further benefits from south facing garden.

Not available to 3 sharers.

OUTSIDE

Garden

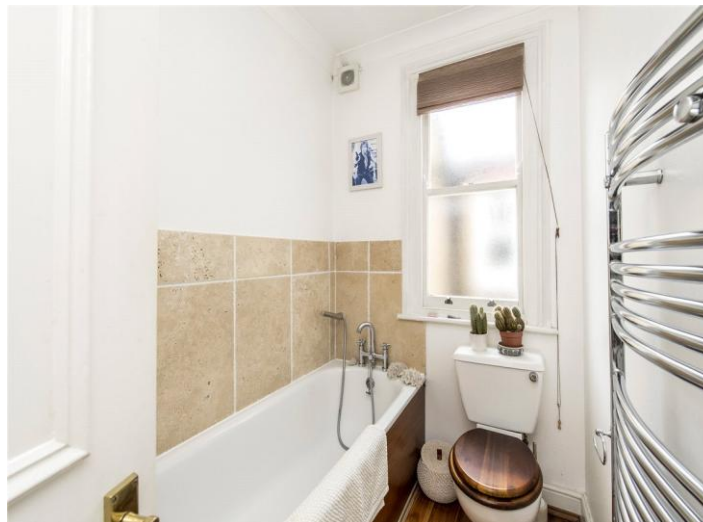


ADDITIONAL INFORMATION

Offers Available for a minimum term of 12 months longer terms will be considered

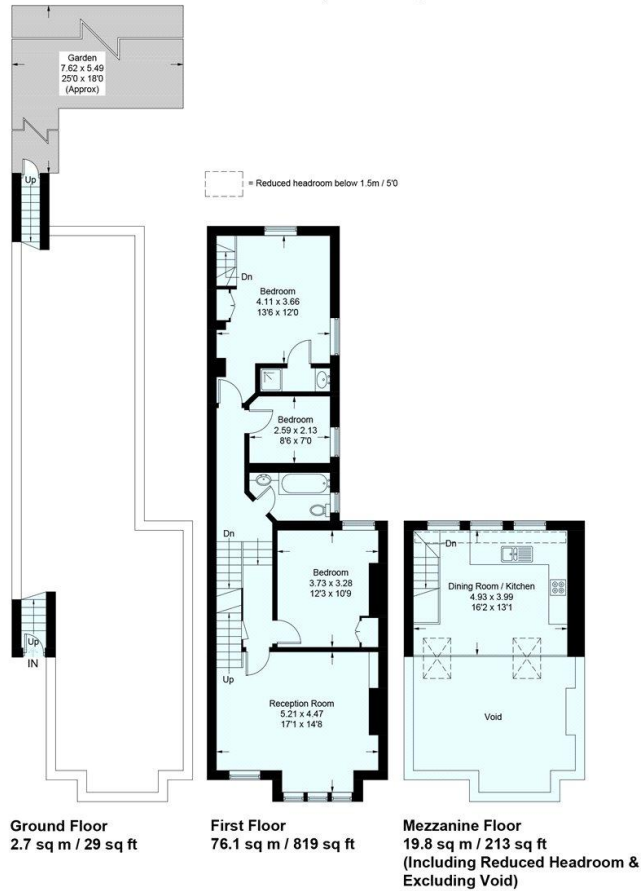
Viewing Strictly by appointment

Local Authority Hammersmith and Fulham
Council Tax Band E



Niton Street, SW6

Approximate Gross Internal Area
(Including Reduced Headroom & Excluding Void)
78.8 sq m / 848 sq ft
Mezzanine Floor = 19.8 sq m / 213 sq ft
Total = 98.6 sq m / 1061 sq ft
Approximate Gross Internal Area
(Excluding Reduced Headroom & Void)
78.8 sq m / 848 sq ft
Mezzanine Floor = 18.1 sq m / 195 sq ft
Total = 96.9 sq m / 1043 sq ft



This plan is for layout guidance only. Not drawn to scale unless stated. Windows and door openings are approximate. Whilst every care is taken in the preparation of this plan, please check all dimensions, shapes and compass bearings before making any decisions reliant upon them. (ID405821)



T: 020 7751 8898

361 Fulham Palace Road, London, SW6 6TA

E: fulhamlettings@carterjonas.co.uk



Exclusive UK affiliate of

CHRISTIE'S
INTERNATIONAL REAL ESTATE

Classification L2 - Business Data

IMPORTANT INFORMATION

These particulars are for general information purposes only and do not represent an offer or contract or part of one. Carter Jonas or anyone in their employment has made every attempt to ensure that the particulars and other information provided are as accurate as possible and they are not intended to amount to advice on which you should rely as being factually accurate. Full information which may be relevant to your decision regarding the property can be found on the property listing on carterjonas.co.uk or a separately available material information sheet, and we would advise you to confirm the details of any material information prior to any offer being submitted. You should not assume that the property has all necessary planning, building regulations or other consents and Carter Jonas has not tested any services, facilities, or equipment. Any measurements and distances given are approximate only. Where Carter Jonas has been provided with a floorplan by a third party, we cannot guarantee that the floorplan has been measured in accordance with IPMS. Purchasers or prospective tenants must satisfy themselves of all of the aforementioned by independent inspection or otherwise. Our images only represent part of the property as it appeared at the time they were taken and do not represent the furnishings included, these are confirmed in a separate inventory. If you require further information, please contact us. *Administration fees may apply depending on tenancy type. Please contact your local branch for this information.