



COLEHILL GARDENS, SW6
£4,000pcm

Carter Jonas

COLEHILL GARDENS, SW6 6SZ

- 3 Bedrooms
- Reception room
- Dining room
- Kitchen
- 3 bathrooms (one en-suite)
- Eaves storage
- Built-in wardrobes
- Study
- Council Tax Band D

LOCATION

Located just around the corner from the luscious, green Bishops Park which stretches along the river Thames there are also several rows of tennis courts nearby. Brilliant local cafes and restaurants are within the immediate vicinity of the property on the nearby Fulham Road and Fulham High Street. Only 0.5 mile from Putney Bridge Station (District Line) and 0.8 mile from Parsons Green Station (District Line). Furthermore, the Piccadilly Line provides a direct link to Heathrow Airport from Hammersmith Station (1.5 mile) which is just a short bus ride away straight up the Fulham Palace Road.

THE PROPERTY

The property benefits from dual aspect which makes it bright throughout. It further boasts a unique and multi-functioned layout on the first level as the living room is connected to the dining room and study which can be closed off by its elegantly designed double doors to either side. The kitchen is adjacent to the dining room and is complete with brand new appliances recently refurbished to high specifications. There is also a fully modernised bathroom on the same level. The upper level provides a large principal bedroom with en-suite bathroom, two further bedrooms and another bathroom. Throughout the property space is beautifully utilised with spacious eaves for extra storage space, as well as many capacious built-in wardrobes.

A spacious newly renovated top floor duplex apartment within a pristine period mansion block in Colehill Gardens. The property has undergone a major refurbishment which has resulted in stunningly high quality finishes.

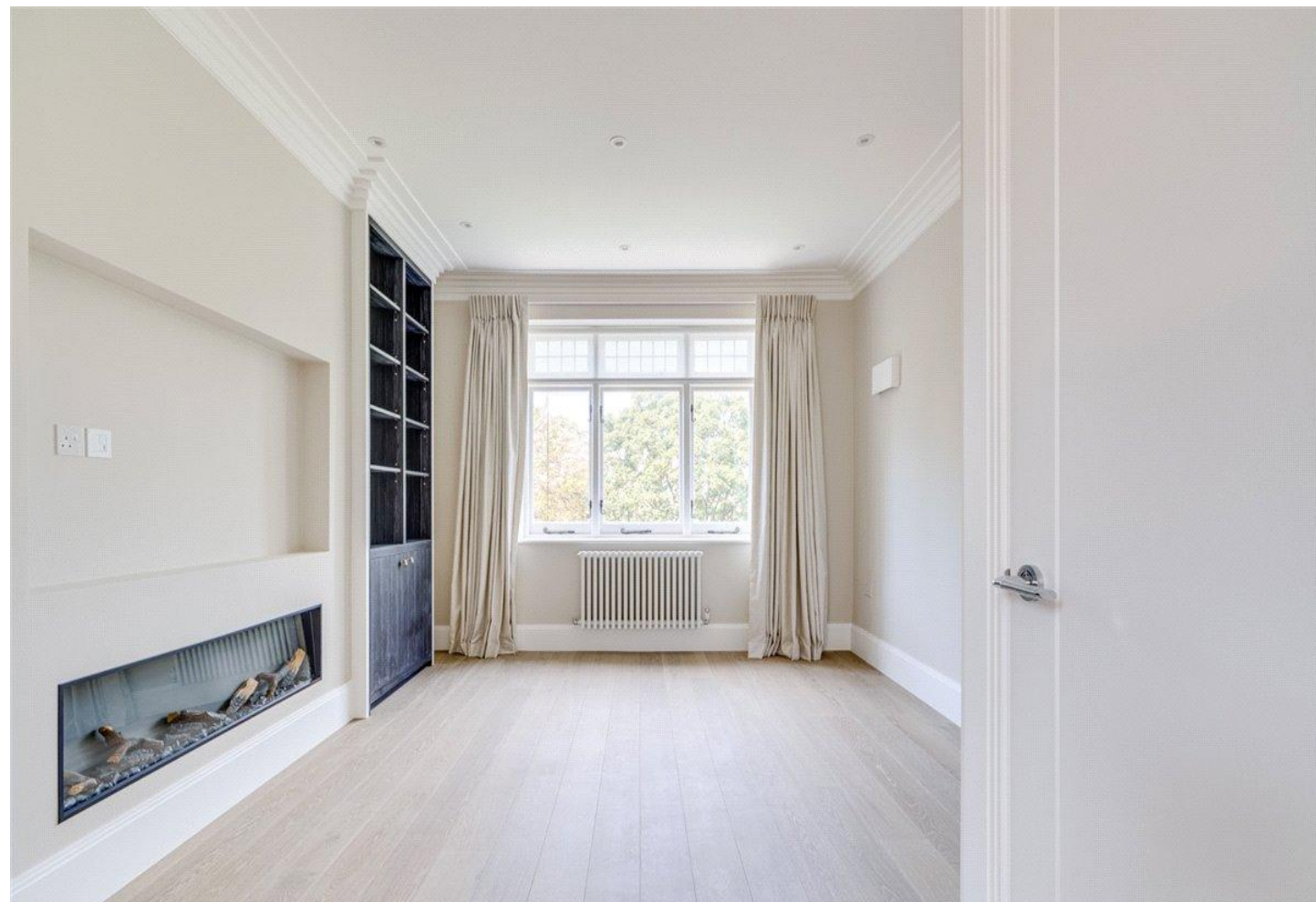


ADDITIONAL INFORMATION

Offers Available for a minimum term of 12 months longer terms will be considered

Viewing Strictly by appointment

Local Authority Hammersmith and Fulham - Council Tax Band D

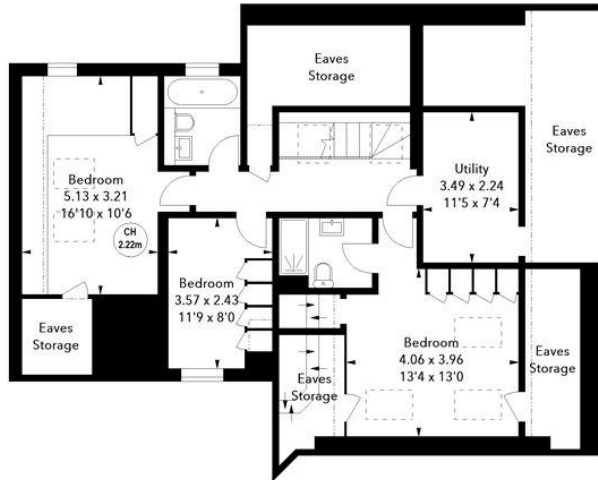
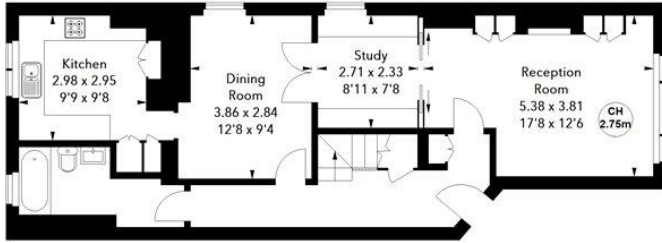


Colehill Gardens, SW6

Approximate Area = 182.83 sq m / 1968 sq ft
 (Including Eaves Storage)
 Eaves Storage = 36.88 sq m / 397 sq ft



Key :
 CH - Ceiling Height



The floor plan is not to scale and measurements and areas shown are approximate and therefore should be used for illustrative purposes only. The plan has been prepared in accordance with the RICS code of Measuring Practice and whilst we have confidence in the information produced, it must not be relied on. If there is any aspect of particular importance, you should carry out or commission your own inspection of the property.



T: 020 7751 8898

361 Fulham Palace Road, London, SW6 6TA

E: parsonsgreen.residential.lettings@carterjonas.co.uk

carterjonas.co.uk

Offices throughout the UK



Classification L2 - Business Data

IMPORTANT INFORMATION

Our property particulars do not represent an offer or contract, or part of one. The information given is without responsibility on the part of the agents, seller(s) or lessor(s) and you should not rely on the information as being factually accurate about the property, its condition or its value. Neither Carter Jonas LLP nor anyone in its employment or acting on its behalf has authority to make any representation or warranty in relation to this property. We have not carried out a detailed survey, nor tested the services, appliances or fittings at the property. The images shown may only represent part of the property and are as they appeared at the time of being photographed. The areas, measurements and distances are approximate only. Where Carter Jonas have been provided with a floorplan by a third party, we can not guarantee that the floorplan has been measured in accordance with IPMS. Any reference to alterations or use does not mean that any necessary planning permission, building regulation or other consent has been obtained. The VAT position relating to the property may change without notice. Administration fees may apply depending on tenancy type. Please contact your local branch for this information.