

**CULMSTOCK ROAD, LONDON, SW11**  
£3,397 per month\*

**Carter Jonas**



# CULMSTOCK ROAD, LONDON, SW11

A bright split level three bedroom Victorian flat situated in a prime spot 'in between the commons', located near to Belleville Schools, Honeywell and Broomwood as well as many nurseries.

- 3 bedrooms
- 2 bathrooms
- Honeywell and Belleville School and Wix
- Clapham South tube (Northern line)
- Clapham Junction
- Between the Commons
- Northcote Road

Culmstock Road is ideally located close to Clapham Junction, Lycee Francais Wix School, Belleville and Honeywell schools and Northcote Road. There are a wonderful variety of shops, delis, restaurants and bars along Northcote Road.

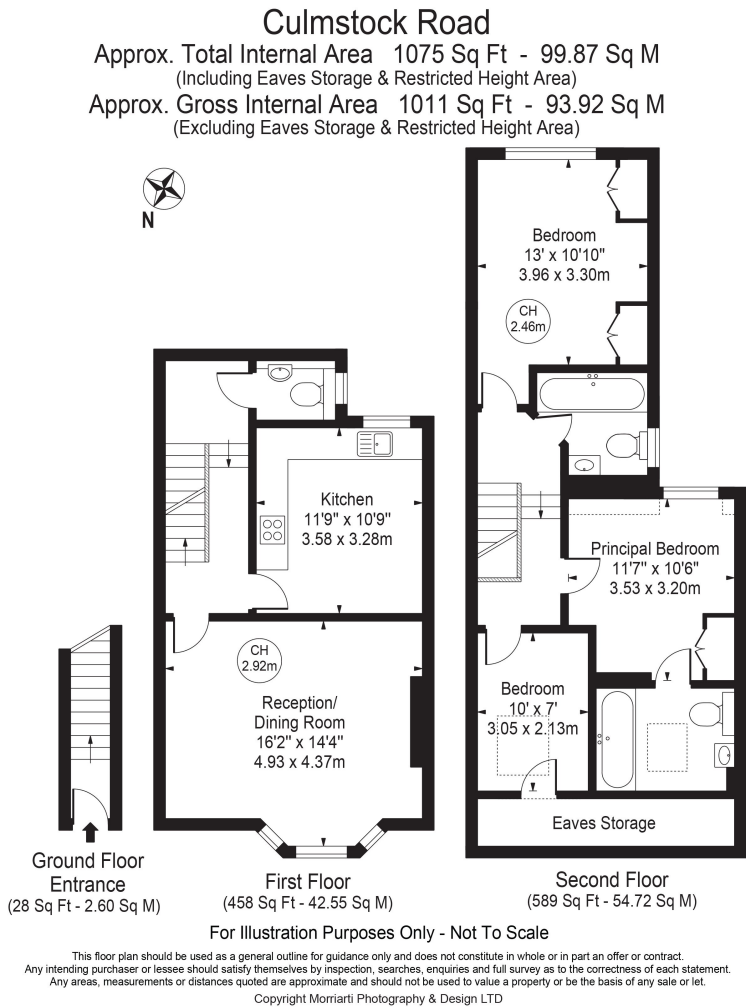
Holding Deposit (1 Weeks' Rent): £783.92  
Security Deposit (6 Weeks' Rent): £3,919.61  
Minimum Tenancy Length: 12 months  
Wandsworth Council Tax Band: E

- Council Tax Band = E
- Deposit Required = £3,919.62
- Minimum term 12 months
- 3 bedrooms
- 2 bathrooms
- Honeywell and Belleville School and Wix
- Clapham South tube (Northern line)
- Clapham Junction
- Between the Commons
- Northcote Road
- EPC = C

Energy Efficiency Rating		Current	Potential
Very energy efficient - lower running costs			
(91-100)	A		
(81-90)	B		
(69-80)	C	73	76
(55-68)	D		
(39-54)	E		
(21-38)	F		
(1-20)	G		
Not energy efficient - higher running costs			
England, Scotland & Wales		EU Directive 2002/91/EC	

Wandsworth Lettings 020 8682 3121

wandsworth-residentiallettings@carterjonas.co.uk  
19 Bellevue Road, London, SW17 7EG



## IMPORTANT INFORMATION

These particulars are for general information purposes only and do not represent an offer or contract or part of one. Carter Jonas has made every attempt to ensure that the particulars and other information provided are as accurate as possible and are not intended to amount to advice on which you should rely as being factually accurate. You should not assume that the property has all necessary planning, building regulations or other consents and Carter Jonas have not tested any services, facilities or equipment. Any measurements and distances given are approximate only. Where Carter Jonas have been provided with a floorplan by a third party, we can not guarantee that the floorplan has been measured in accordance with IPMS. Purchasers or prospective tenants must satisfy themselves of all of the aforementioned by independent inspection or otherwise. Although we make reasonable efforts to update our information, neither Carter Jonas nor anyone in its employment or acting on its behalf makes any representations warranties or guarantees, whether express or implied, in relation to the property, or that the content in these particulars is accurate, complete or up to date. Our images only represent part of the property as it appeared at the time they were taken and do not represent the furnishings included, these are confirmed in a separate inventory. If you require further information please contact us.

\*Administration fees may apply depending on tenancy type. Please contact your local branch for this information.