



ST VALENTINES, HYDE ABBEY ROAD, WINCHESTER, SO23 7DA

Carter Jonas

HYDE ABBEY ROAD, WINCHESTER, SO23 7DA

Practical modern home • 2 bedrooms • Kitchen / breakfast room •
Sitting room • 2 bathrooms • Garden • Parking • Central
Winchester location • EPC rating B

DESCRIPTION

St Valentines is a delightful modern home, built in around 2012 and ideally located within half a mile of Winchester High Street. Upon entering the property, a generous hallway leads on to the sitting room, kitchen / breakfast room, and downstairs loo. The sitting room is double aspect, with bifold doors onto the rear garden. The kitchen / breakfast room is a good size, with a range of base and eye level units, integrated appliances, and space for a kitchen table. The first floor accommodation comprises 2 bedrooms, one with an en suite bathroom and one with an en suite shower room. Both bedrooms have integrated wardrobes.

Externally, the rear garden is mainly laid to patio, and is ideal for outdoor entertaining. In addition to a small storage shed there is a gate leading to an allocated parking space at the rear.

LOCATION

The property is situated in a quiet cul de sac in the desirable residential neighbourhood of Hyde. It is within half a mile of the station (Waterloo in around 1 hour) and Winchester city centre with its many shops, restaurants, public houses, coffee shops, library, theatre, cinema, Cathedral and more. There are attractive walks and cycle routes along the River Itchen and Winnall Moors which are also close by. The catchment schools are the very well-regarded St Bede Church of England Primary School and The Westgate School (primary and secondary). In addition, St Swithun's School for girls, Winchester College and The Pilgrims' School for boys are also within easy access.

ADDITIONAL INFORMATION

Tenure: Freehold.

Services: Mains electricity, drainage and gas.

Local Authority: Winchester City Council. Council Tax Band D.

Viewings: Strictly by appointment through the selling agents,
Carter Jonas.

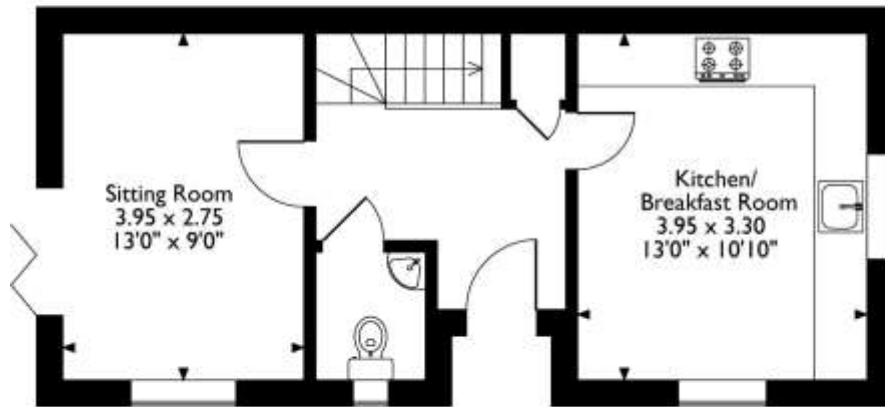
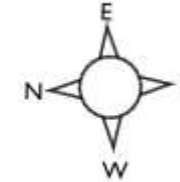
STYLISH CONTEMPORARY HOME IN THE HEART OF WINCHESTER



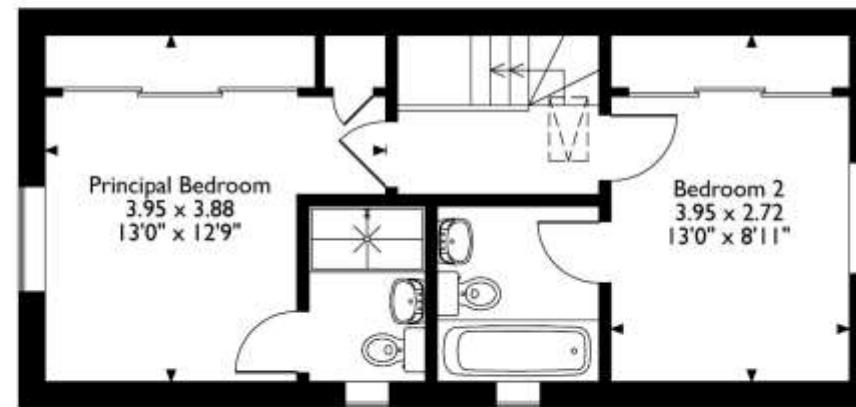


St. Valentines, Hyde Abbey Road, Winchester, Hampshire

Approximate Gross Internal Area 72 Sq M/776 Sq Ft

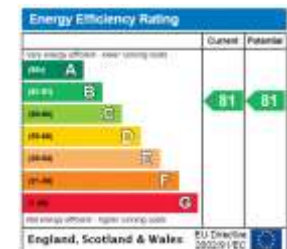


Ground Floor



First Floor

Please note that the location of doors, windows and other items are approximate and this floorplan is to be used for illustrative purposes only. Unauthorized reproduction is prohibited.



Winchester 01962 842742

winchester@carterjonas.co.uk
9a Jewry Street, Winchester, SO23 8RZ

carterjonas.co.uk
Offices throughout the UK

Exclusive UK affiliate of
CHRISTIE'S
INTERNATIONAL REAL ESTATE

IMPORTANT INFORMATION

These particulars are for general information purposes only and do not represent an offer of contract or part of one. Carter Jonas has made every attempt to ensure that the particulars and other information provided are as accurate as possible and are not intended to amount to advice on which you should rely as being factually accurate. You should not assume that the property has all necessary planning, building regulations or other consents and Carter Jonas have not tested any services, facilities or equipment. Any measurements and distances given are approximate only. Purchasers must satisfy themselves of all of the aforementioned by independent inspection or otherwise. Although we make reasonable efforts to update our information, neither Carter Jonas LLP nor anyone in its employment or acting on its behalf makes any representations warranties or guarantees, whether express or implied, in relation to the property, or that the content in these particulars is accurate, complete or up to date. Our images only represent part of the property as it appeared at the time they were taken. If you require further information please contact us.