



CLEMATIS HOUSE, LOW STREET, THORNTON LE CLAY, YORK
OFFERS OVER £575,000

Carter Jonas

CLEMATIS HOUSE, LOW STREET, THORNTON LE CLAY, YORK YO60 7TG

Clematis House occupies a generous plot in the heart of Thornton Le Clay village, set behind a manicured front garden with driveway parking to either side. The property offers great character and charm and has been well-maintained and improved over the years. At over 2100 square feet, the accommodation is spacious with well-proportioned rooms, traditionally arranged with a several reception rooms on the ground floor, including a sitting room with open fire, dining room and sunroom. The kitchen/breakfast room spans the width of the house to the rear, where there is ample space and opportunity to extend if desired.

The first floor comprises 4 double bedrooms, a contemporary house bathroom and additional wc. The impressive master suite benefits from an en suite bathroom and walk-in wardrobe, and French windows leading to a spacious balcony with fabulous views over the garden and neighbouring countryside. The second bedroom also offers en suite shower facilities, fitted wardrobes and garden views.

Beautifully designed, the south-facing rear garden is abundant with a variety of specimen trees and shrubbery, colourful planted beds, and fruit and vegetable patches. Featuring a terrace seating area, greenhouse and summer house, it perfectly complements the property and natural beauty of the surrounding countryside.

In addition to the integral garage, there is a brick outbuilding with power and water, currently serving as a garden store and studio.

Thornton le Clay lies to the north of York, amidst the undulating countryside that becomes the Howardian Hills Area of Outstanding Natural Beauty. It is well placed for the A64, with York 12 miles away and the market town of Malton even closer. The village has a strong sense of community and shares many of its facilities with neighbouring Foston; together they offer a primary school, church, village hall and a bus service.

TENURE Freehold

EPC BAND F

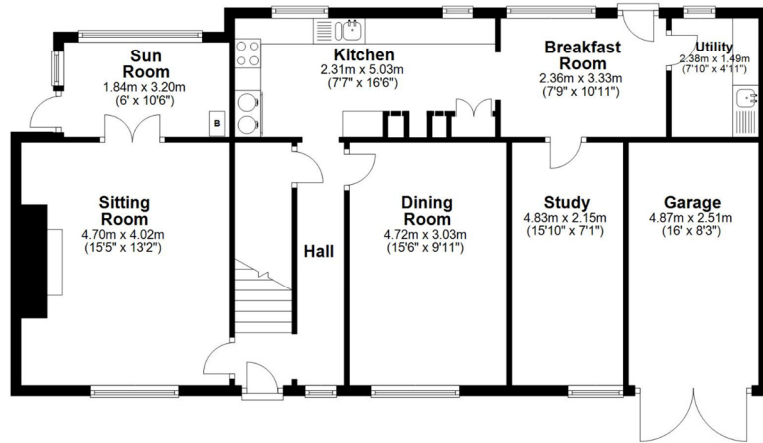
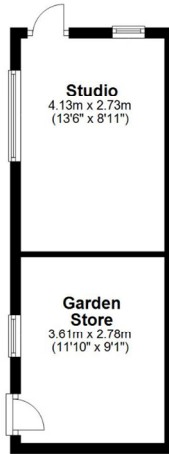
AN ATTRACTIVE PERIOD HOUSE SET IN GENEROUS SOUTH-FACING GARDENS,
SITUATED IN A SOUGHT-AFTER VILLAGE ON THE EDGE OF THE HOWARDIAN HILLS.



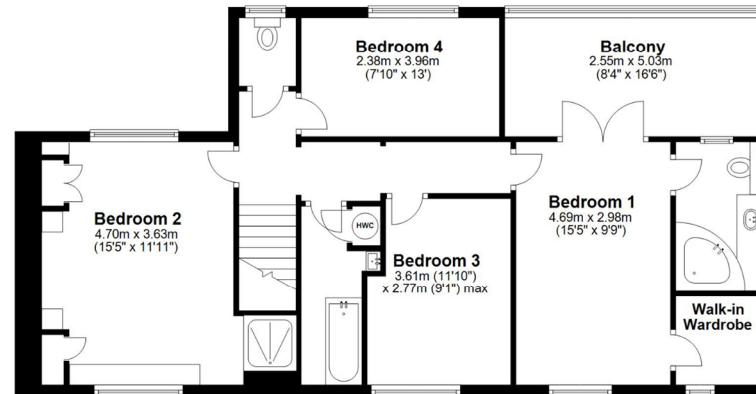




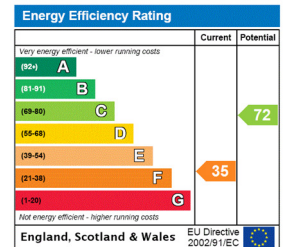
Ground Floor Approx. 119.7 sq. metres (1288.0 sq. feet)



First Floor Approx. 79.0 sq. metres (850.1 sq. feet)



Total area: approx. 198.6 sq. metres (2138.1 sq. feet)
Clematis House, Thornton Le Clay



York 01904 558200

york@carterjonas.co.uk
82 Micklegate, York, YO1 6LF

carterjonas.co.uk
Offices throughout the UK

Exclusive UK affiliate of

CHRISTIE'S
INTERNATIONAL REAL ESTATE

IMPORTANT INFORMATION

These particulars are for general information purposes only and do not represent an offer of contract or part of one. Carter Jonas has made every attempt to ensure that the particulars and other information provided are as accurate as possible and are not intended to amount to advice on which you should rely as being factually accurate. You should not assume that the property has all necessary planning, building regulations or other consents and Carter Jonas have not tested any services, facilities or equipment. Any measurements and distances given are approximate only. Purchasers must satisfy themselves of all of the aforementioned by independent inspection or otherwise. Although we make reasonable efforts to update our information, neither Carter Jonas LLP nor anyone in its employment or acting on its behalf makes any representations warranties or guarantees, whether express or implied, in relation to the property, or that the content in these particulars is accurate, complete or up to date. Our images only represent part of the property as it appeared at the time they were taken. If you require further information please contact us.